

По вопросам продаж и поддержки обращайтесь:

Архангельск (8182)63-90-72	Краснодар (861)203-40-90	Рязань (4912)46-61-64
Астана (7172)727-132	Красноярск (391)204-63-61	Самара (846)206-03-16
Белгород (4722)40-23-64	Курск (4712)77-13-04	Санкт-Петербург (812)309-46-40
Брянск (4832)59-03-52	Липецк (4742)52-20-81	Саратов (845)249-38-78
Владивосток (423)249-28-31	Магнитогорск (3519)55-03-13	Смоленск (4812)29-41-54
Волгоград (844)278-03-48	Москва (495)268-04-70	Сочи (862)225-72-31
Вологда (8172)26-41-59	Мурманск (8152)59-64-93	Ставрополь (8652)20-65-13
Воронеж (473)204-51-73	Набережные Челны (8552)20-53-41	Тверь (4822)63-31-35
Екатеринбург (343)384-55-89	Нижний Новгород (831)429-08-12	Томск (3822)98-41-53
Иваново (4932)77-34-06	Новокузнецк (3843)20-46-81	Тула (4872)74-02-29
Ижевск (3412)26-03-58	Новосибирск (383)227-86-73	Тюмень (3452)66-21-18
Казань (843)206-01-48	Орел (4862)44-53-42	Ульяновск (8422)24-23-59
Калининград (4012)72-03-81	Оренбург (3532)37-68-04	Уфа (347)229-48-12
Калуга (4842)92-23-67	Пенза (8412)22-31-16	Челябинск (351)202-03-61
Кемерово (3842)65-04-62	Пермь (342)205-81-47	Череповец (8202)49-02-64
Киров (8332)68-02-04	Ростов-на-Дону (863)308-18-15	Ярославль (4852)69-52-93

Единый адрес: btk@nt-rt.ru **Веб-сайт:** www.burkert.nt-rt.ru

ЭЛЕКТРОМАГНИТНЫЕ КЛАПАНЫ

G 1/8, M5



Advantages/Benefits

- ▶ Body materials: brass, stainless steel
- ▶ Short response times
- ▶ Compact design
- ▶ When de-energized, outlet port exhausted or pressurized, mixer valve

Design/Function

Type 300 is available in a variety of different circuit functions, to suit the respective application.

When energized, the solenoid armature is drawn against a spring.

The flow path through the valve is dependent upon the chosen circuit function. The solenoid epoxy encapsulation efficiently dissipates the heat generated by the coil.

Applications

- Neutral gases and liquids
- Pneumatic control equipment
- Vacuum
- Shut-off, dosing, filling and ventilating
- Gas control, welding technology
- Small-scale instruments, laboratory and measuring technology

burkert
Easy Fluid Control Systems

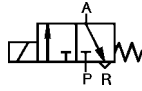
3/2-Way Miniature Solenoid Valve, Direct-acting

Type 300

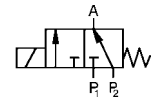
Technical Data

Circuit Function

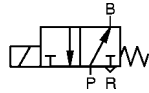
C 3/2-way valve, when de-energized, outlet A exhausted



E Mixer valve, when de-energized pressure port P2 open, P1 closed



D 3/2-way valve, when de-energized, outlet B pressurized



Body Material

Body and seat of brass
Stainless steel 1.4305

Specifications

Orifice DN	Kv-Value Water	QNN-Value Air ¹⁾	Pressure Range ²⁾ at Circuit Function		Weight	
			D, C [bar]	E [bar]	M 5 [kg]	G 1/8
[mm]	[m ³ /h]	[l/min]				
1,2	0,045	48	0-10		0,10	0,12
1,6	0,060	65	0- 6	0-3	0,10	0,12

¹⁾ Measured with 6 bar upstream pressure and 1 bar pressure drop across the valve at +20 °C., ²⁾ Also suitable for vacuum.

All pressures quoted are gauge pressures with respect to the prevailing atmospheric pressure.

Operating Data (Valve)

Seal Materials/Fluids Handled/Temp.- Range

NBR Neutral fluids, e.g. compressed air, town gas, water, hydraulic oil, oils and fat without additives -10 to +90 °C

EPDM Oils and fat-free fluids, e.g. hot water alkaline washing and bleaching lyes -40 to +90 °C

FPM Hot air, oxygen, per-solutions, hot oils oils with additives -10 to +100 °C

For more detailed information please refer to resistance chart (Leaflet-No. 1896009).

Max. ambient temperature + 55 °C

Max. viscosity 21 mm²/s

Response times opening 12 ms
closing 8 ms

Times measured at outlet A or B from switching on until pressure rise to 90 % / pressure drops to 10 % at a max. working pressure of 6 bar.

Port connection M5, G 1/8

Operating Data (Actuator)

Operating voltages 24, 110, 240 V/50 Hz
12, 24 V/=
24 V battery voltage

Voltage tolerance ±10 %

Power consumption AC 9 VA (inrush)
6 VA/ 4 W (hold)
DC 4 W

Duty cycle 100% continuously rated,
for multiple assembly
reduced duty cycle or use
2W version on request

Cycling rate up to 1000 c.p.m

Rating with cable plug and cable
IP65

Installation / Accessories

Installation as required, but preferably
with solenoid system upright

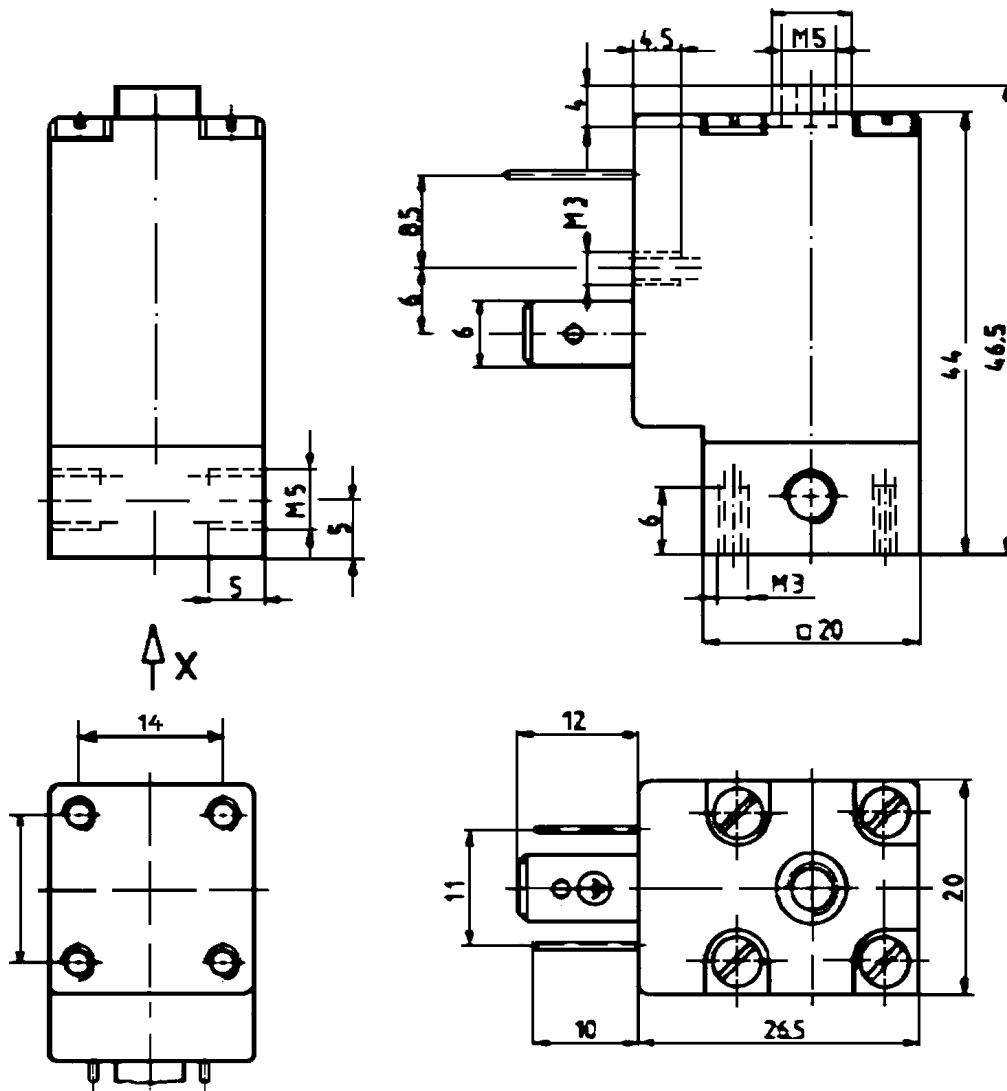
Electrical connection

- plug connection without cable plug (supplied as standard)
- moulded-in cable on request
- moulded-in flying leads on request

3/2-Way Miniature Solenoid Valve, Direct-acting

Type 300

Dimensions in mm



3/2-Way Miniature Solenoid Valve, Direct-acting

Type 300

Ordering Chart (Other Versions on Request)

Circuit Function	Orifice DN [mm]	Flow Rate		Port Connection [mm]	Pressure Range [bar]	Body Material	Seal Material	Weight [kg]	Voltage/ Frequency [V/Hz]	Order-No.					
		Water Kv-Value [m³/h]	Air ¹⁾ QNn [l/min]												
D	0,12	0,045	48	M 5	0-10	Brass	NBR	0,10	230/50	054 613 Z					
									024/=B ³⁾	019 878 G					
	01,6	0,060	65	G 1/8	0- 6	Brass	EPDM	0,10	024/50	067 073 U					
									024/=	053 130 Y					
									110/50	018 819 U					
									230/50	045 595 P					
									240/50	055 284 Z					
									M 5	0- 6	Brass	NBR	0,10	024/50	053 068 H
														024/=	048 175 C
														110/50	066 586 K
230/50	064 160 H														
240/50	066 619 B														
		E	01,6	0,060	65	G 1/8	0- 3	Stainless	FPM	0,12	012/=	056 585 Q			

¹⁾ Measured with 6 bar upstream pressure and 1 bar pressure drop across the valve at +20 °C, ³⁾ =B battery voltage

DTS 1000010921 EN Version: A Status: RL (released | freigegeben | validé) printed: 22.09.2017

