

По вопросам продаж и поддержки обращайтесь:

Архангельск (8182)63-90-72	Краснодар (861)203-40-90	Рязань (4912)46-61-64
Астана (7172)727-132	Красноярск (391)204-63-61	Самара (846)206-03-16
Белгород (4722)40-23-64	Курск (4712)77-13-04	Санкт-Петербург (812)309-46-40
Брянск (4832)59-03-52	Липецк (4742)52-20-81	Саратов (845)249-38-78
Владивосток (423)249-28-31	Магнитогорск (3519)55-03-13	Смоленск (4812)29-41-54
Волгоград (844)278-03-48	Москва (495)268-04-70	Сочи (862)225-72-31
Вологда (8172)26-41-59	Мурманск (8152)59-64-93	Ставрополь (8652)20-65-13
Воронеж (473)204-51-73	Набережные Челны (8552)20-53-41	Тверь (4822)63-31-35
Екатеринбург (343)384-55-89	Нижний Новгород (831)429-08-12	Томск (3822)98-41-53
Иваново (4932)77-34-06	Новокузнецк (3843)20-46-81	Тула (4872)74-02-29
Ижевск (3412)26-03-58	Новосибирск (383)227-86-73	Тюмень (3452)66-21-18
Казань (843)206-01-48	Орел (4862)44-53-42	Ульяновск (8422)24-23-59
Калининград (4012)72-03-81	Оренбург (3532)37-68-04	Уфа (347)229-48-12
Калуга (4842)92-23-67	Пенза (8412)22-31-16	Челябинск (351)202-03-61
Кемерово (3842)65-04-62	Пермь (342)205-81-47	Череповец (8202)49-02-64
Киров (8332)68-02-04	Ростов-на-Дону (863)308-18-15	Ярославль (4852)69-52-93

Единый адрес: btk@nt-rt.ru **Веб-сайт:** www.burkert.nt-rt.ru

Электромагнитные клапаны со взрывозащитой Burkert

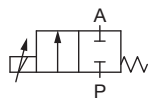


2/2-Way Solenoid Control Valve

- Made for custom engineered applications
- DN 0.8 ... 4 mm
- 1/8", 1/4" sub-base or custom engineered armature

Type 2863 is an extremely compact solenoid control valve and is available with an orifice up to 4mm. It is based on the standard version of Type 2873 (see datasheet). It is used as an actuator in closed control loops (pressure, flow, temperature, etc.). Compared with the standard version, the valve is essentially of simpler construction and assembly and testing procedures are optimized, easing high volume series production with shorter delivery times. Please follow the instructions for a customised design on page 5 of this datasheet.

Circuit function A



direct acting 2-way
solenoid control valve,
normally closed

Valve control takes place through a PWM signal¹⁾. The duty cycle of the PWM signal determines the coil current and hence the position of the plunger.

The Bürkert control electronics Type 8605 (see relevant datasheet) converts an analog signal to a reference value corresponding to the valve type PWM signal and provides additional functions such as temperature compensation (coil heating), ramp function and the adjustment of min. and max. duty cycle/coil current for the control range.

Please note the sizing comments for such a control valve on page 2.

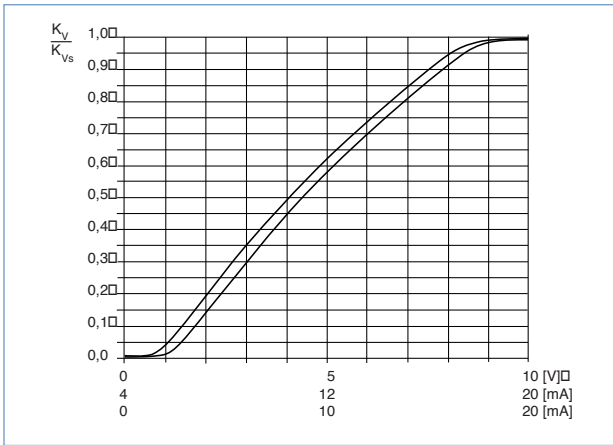
Technical Data - Valve	
Body material	Brass, stainless steel
Seal material	FKM, EPDM on request
Medium	Neutral gases, liquids on request
Pressure range	0 ... -16 bar ²⁾
Medium temperature	-10 ... +90 °C
Ambient temperature	max. +55 °C
Power supply	24 V DC
Max. current	420mA (at 24V-hold)
Power consumption	9 W
Duty cycle	100% continuously rated
PWM control frequency	400 Hz
Port connection	Sub-base, G 1/8, G 1/4, NPT 1/8, NPT 1/4, further on request
Electrical connection	Cable plug Type 2508, Form B industrial standard Item no. 008 376
Installation	As required, preferably with actuator in upright position
Typical control data ³⁾	
Hysteresis	< 5%
Repeatability	< 1.0 % of F.S.
Sensitivity	< 1.0 % of F.S.
Span	1:25
Protection class - valve	IP65

¹⁾ PWM pulse width modulation

²⁾ Pressure data [bar]: Measured as overpressure to the atmospheric pressure, orifice further depends on nominal pressure

³⁾ Characteristic data of control behaviour depends on process conditions

Characteristics of a proportional valve



Advice for valve sizing

In continuous flow applications, the choice of appropriate valve size is much more important than with on/off valves. The optimum size should be selected such that the resulting flow in the system is not unnecessarily reduced by the valve. However, a sufficient part of the pressure drop should be taken across the valve even when it is fully opened.

Recommended value: $\Delta p_{\text{valve}} > 25\%$ of total pressure drop within the system

Otherwise, the ideal, linear valve curve characteristic is changed.

For that reason take advantage of Bürkert competent engineering services during the planning phase!

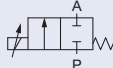
Determination of the k_v value

Pressure drop	k_v value for liquids [m ³ /h]	k_v value for gases [m ³ /h]
Subcritical $p_2 > \frac{p_1}{2}$	$= Q \sqrt{\frac{\rho}{1000 \Delta p}}$	$= \frac{Q_N}{514} \sqrt{\frac{T_1 \rho_N}{p_2 \Delta p}}$
Supercritical $p_2 < \frac{p_1}{2}$	$= Q \sqrt{\frac{\rho}{1000 \Delta p}}$	$= \frac{Q_N}{257 p_1} \sqrt{T_1 \rho_N}$

- k_v Flow coefficient [m³/h]⁴⁾
- Q_N Standard flow rate [m³/h]⁵⁾
- p_1 Inlet pressure [bar]⁶⁾
- p_2 Outlet pressure [bar]⁶⁾
- Δp Differential pressure $p_1 - p_2$ [bar]
- ρ Density [kg/m³]
- ρ_N Standard density [kg/m³]
- T_1 Medium temperature [(273+t)K]

⁴⁾ measured for water, $\Delta p = 1$ bar, via the device
⁵⁾ Standard conditions at 1.013 bar⁶⁾ and 0 °C (273K)
⁶⁾ Absolute pressure

Standard orifice

Circuit function	Orifice [mm]	Port connection	k_{vs} value water [m ³ /h] ⁷⁾	Q_{Nn} value [l/min] ⁸⁾	Nominal pressure [bar] ⁹⁾
<p>A</p> 	0.8	sub-base FK01	0.018	19	16
		G 1/8	0.018	19	16
		NPT 1/8	0.018	19	16
	1.2	sub-base FK01	0.040	43	12
		G 1/8	0.040	43	12
		NPT 1/8	0.040	43	12
	1.5	sub-base FK01	0.060	65	10
		G 1/8	0.060	65	10
		NPT 1/8	0.060	65	10
	2.0	sub-base FK01	0.100	108	8
		G 1/8	0.100	108	8
		NPT 1/8	0.100	108	8
		G 1/4	0.100	108	8
	2.5	sub-base FK01	0.100	108	8
		NPT 1/4	0.100	108	8
G 1/4		0.150	162	5	
3.0	sub-base FK01	0.150	162	5	
	G 1/4	0.150	162	5	
	NPT 1/4	0.150	162	5	
3.0	sub-base FK01	0.220	237	3.5	
	G 1/4	0.220	237	3.5	
	NPT 1/4	0.220	237	3.5	
4.0	sub-base FK01	0.320	345	2	
	G 1/4	0.320	345	2	
	NPT 1/4	0.320	345	2	

⁷⁾ k_{vs} value: Flow rate value for water, measured at +20 °C and 1 bar pressure differential over a fully opened valve.

⁸⁾ Q_{Nn} -value: Flow rate for air with inlet pressure of 6 bar, 1 bar pressure differential and +20 °C.

⁹⁾ Pressure data [bar]: Overpressure with respect to atmospheric pressure.

Please use page 5 of this datasheet to inquire about your individual requirements

i Further versions on request

Materials
Other seal materials
Valve body with special armature

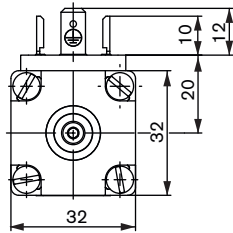
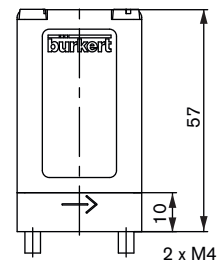
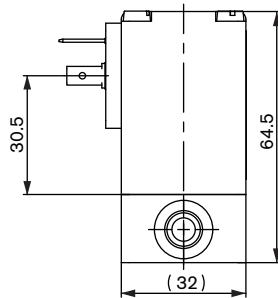
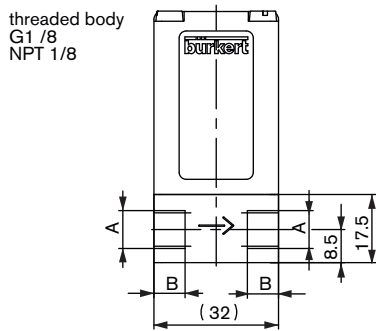
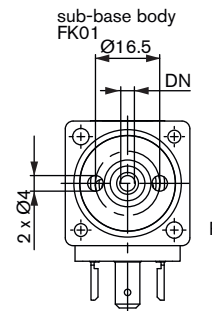
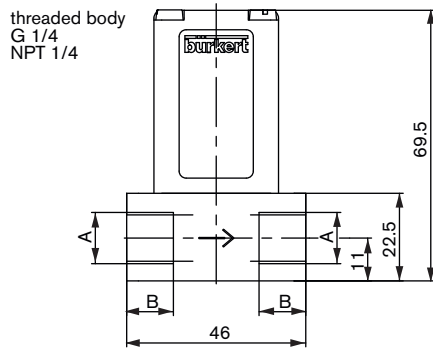
Analytical
Oxygen version
Parts oil-, fat- and silicon free

Coil
Other coil power
Specific, power setting for lower pressure
Other operating voltages
Coil with flying leads

Valve armature
Special valve orifice

Approvals
ATEX
UL
CSA
DVGW/ Gas Appliances Directive (GAD)

Dimensions [mm]



Valve body version	Threaded port			
	G 1/4	NPT 1/4	G 1/8	NPT 1/8
A				
B	12	10	8	7

