

По вопросам продаж и поддержки обращайтесь:

Архангельск (8182)63-90-72	Краснодар (861)203-40-90	Рязань (4912)46-61-64
Астана (7172)727-132	Красноярск (391)204-63-61	Самара (846)206-03-16
Белгород (4722)40-23-64	Курск (4712)77-13-04	Санкт-Петербург (812)309-46-40
Брянск (4832)59-03-52	Липецк (4742)52-20-81	Саратов (845)249-38-78
Владивосток (423)249-28-31	Магнитогорск (3519)55-03-13	Смоленск (4812)29-41-54
Волгоград (844)278-03-48	Москва (495)268-04-70	Сочи (862)225-72-31
Вологда (8172)26-41-59	Мурманск (8152)59-64-93	Ставрополь (8652)20-65-13
Воронеж (473)204-51-73	Набережные Челны (8552)20-53-41	Тверь (4822)63-31-35
Екатеринбург (343)384-55-89	Нижний Новгород (831)429-08-12	Томск (3822)98-41-53
Иваново (4932)77-34-06	Новокузнецк (3843)20-46-81	Тула (4872)74-02-29
Ижевск (3412)26-03-58	Новосибирск (383)227-86-73	Тюмень (3452)66-21-18
Казань (843)206-01-48	Орел (4862)44-53-42	Ульяновск (8422)24-23-59
Калининград (4012)72-03-81	Оренбург (3532)37-68-04	Уфа (347)229-48-12
Калуга (4842)92-23-67	Пенза (8412)22-31-16	Челябинск (351)202-03-61
Кемерово (3842)65-04-62	Пермь (342)205-81-47	Череповец (8202)49-02-64
Киров (8332)68-02-04	Ростов-на-Дону (863)308-18-15	Ярославль (4852)69-52-93

Единый адрес: btk@nt-rt.ru **Веб-сайт:** www.burkert.nt-rt.ru

**Электромагнитные клапаны для
агрессивных и чистых сред Burkert**

2/2 or 3/2 way Rocker-Solenoid Valve with separating diaphragm

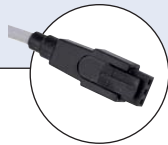


Type 6606 can be combined with...



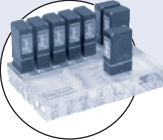
Type 2506

Cable plug form C



Type 2505

Rectangular Cable plug

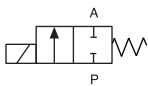


Manifolds

- For maximum chemical resistance requirements
- Compact design with 16 mm width and Cv ratings up to 0.058
- Flexible design for custom manifold assemblies
- High back pressure tightness, excellent cleanability and 100 % duty cycle
- Normally closed, normally open and universal function

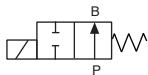
The direct-acting rocker solenoid valves with isolating diaphragm of Type 6606 (2/2- and 3/2-way) are high quality valves for analytical technology. They have minimal dead volume and internal volume with few crevices making them easy to flush out. The fluid only comes into contact with the body material and the FFKM seal. The heat transfer to the medium is minimal. The fluid path is isolated from the coil by a stainless steel plate. The valves are ideal for dosing, filling, mixing and distributing of small quantities of fluid for medical, analytical and laboratory applications.

Circuit function A



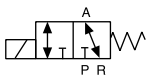
2/2-way valve,
direct-acting,
normally closed

Circuit function B



2/2-way valve,
direct-acting,
normally open

Circuit function T



3/2-way valve,
direct-acting,
universal functions

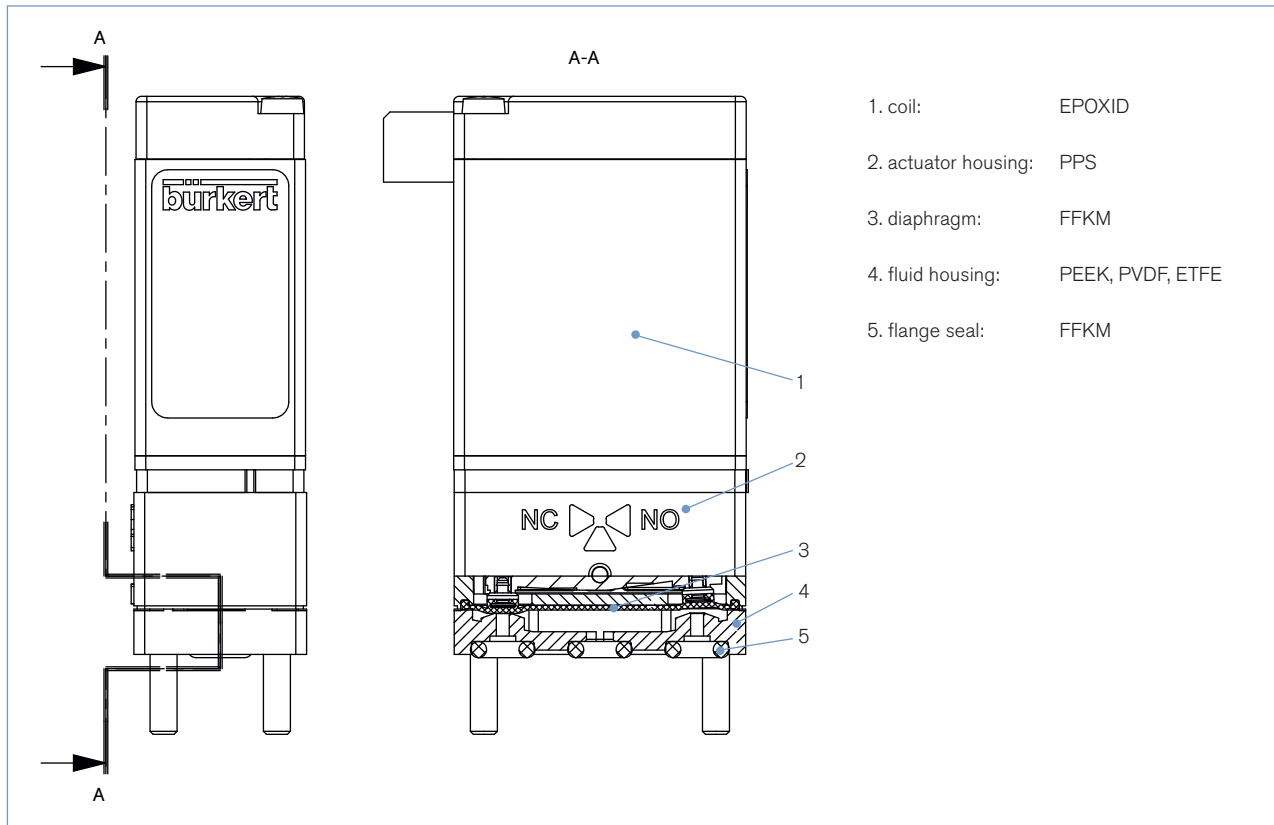
Technical data	
Orifice [mm]	DN 0.8 - DN 1.6 (for details see ordering chart)
Body material	PEEK, PVDF, ETFE
Seal material	FFKM
Media	Resistant to neutral and aggressive liquids and gases (see Burkert chemical resistance chart)
Media temperature	0 to 50 °C ¹⁾
Ambient temperature	max. 55 °C
Internal volumes	with sub-base starting at 44 µl with G 1/8 and NPT 1/8 starting at 100 µl with UNF 1/4" - 28 starting at 25 µl with tube spigot starting at 33 µl < 10 µl ²⁾ on request
Port connection	Bürkert sub-base (16 x 27 mm), G1/8, NPT1/8, UNF 1/4" - 28, tube connection
Electrical connection	Rectangular plug, Type 2505 Spade connection acc. to DIN 43650 C for cable plug Type 2506 on top 2 FEP flying leads, AWG24, length 500 mm ³⁾
Operating voltage	12 and 24 V/DC ; other voltages on request
Voltage tolerance	± 10 %
Power consumption	3.4 W
Duty cycle	100 % continuous rating
Installation	As required, preferably with actuator in upright position
Protection class	IP 65 with flying leads or with cable plug IP 40 with rectangular plug
Response times	According to ISO 12238:2001; Measured at valve outlet with air at 2 bar and +20 °C Opening approx. 25 ms (Pressure rise 0 to 10 %) Closing approx. 25 ms (Pressure drop 100 to 90 %)

¹⁾ Temperature may vary depending on orifice and seal material. For further information see on page 2.

²⁾ The internal volume can vary depending on the housing. For further information see on page 2.

³⁾ Other electrical connectors and other cable lengths upon request.

Materials



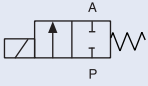
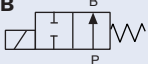
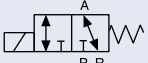
Detailed medium temperature (depending on material and orifice)

	Orifice	Seal material	Temperature range
media temperature	DN 0.8	FFKM	+5 to +50 °C
	DN 1.2 & 1.6	FFKM	+10 to +50 °C
media temperature with limitation on switching time and life expectancy	DN 0.8	FFKM	0 to +50 °C
	DN 1.2 & 1.6	FFKM	+5 to +50 °C

Detailed internal volume (depending on fluid housing)

Body	2-way low dead volume		2-way		3-way	
	fluid chamber	total	fluid chamber	total	fluid chamber	total
sub-base	44 µl	54 µl	97 µl	106 µl	90 µl	106 µl
G 1/8, NPT 1/8	-	-	100 µl	211 µl	92 µl	229 µl
UNF 1/4" - 28	25 µl	69 µl	55 µl	79 µl	54 µl	95 µl
tube connection	33 µl	112 µl	62 µl	142 µl	69 µl	185 µl

Ordering chart for Type 6606

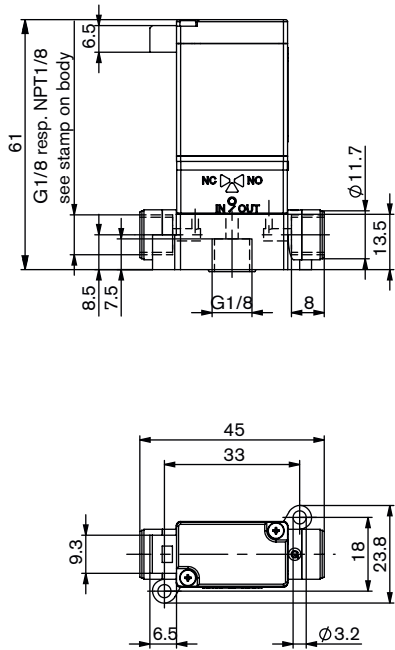
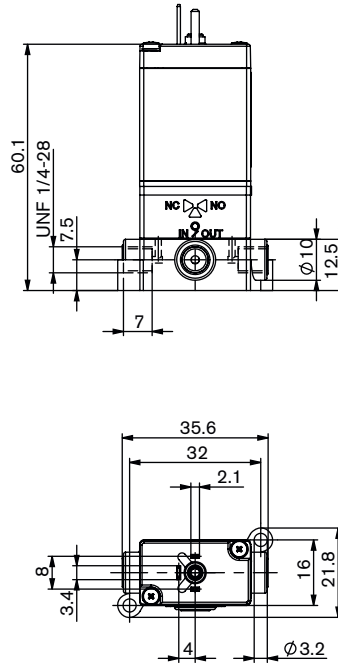
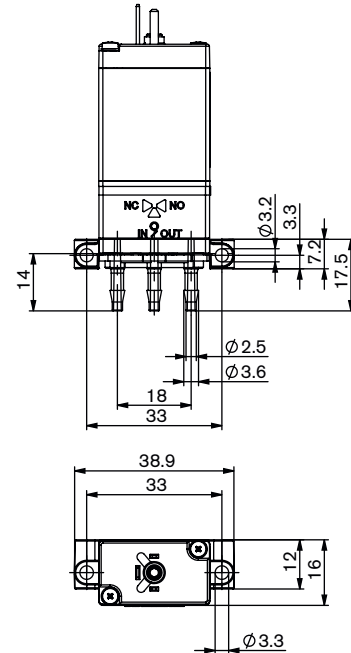
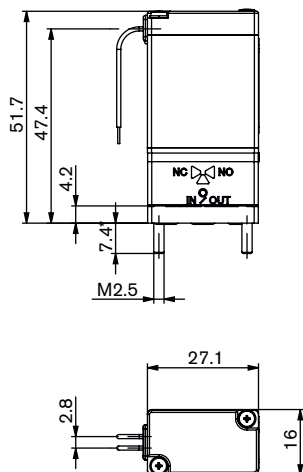
Circuit function	Orifice [mm]	Port connection	Kv value water [m ³ /h]	Cv value water [gal/min]	O ₂ value air [l/min]	Pressure range [bar] ¹⁾	Seal material	Fluid housing material	Electrical connection	Voltage/frequency [V/Hz]	Item no.
A  2/2-way valve, direct acting, normally closed	1.5	UNF 1/4-28	0.03	0.035	33	Vac - 2 ²⁾	FFKM	ETFE	leads, 0.5 m	024/DC	137 759
	1.6	G 1/8	0.05	0.058	54	Vac - 2	FFKM	PVDF	rectangular plug	024/DC	139 146
									Spade connector sideways	024/DC	137 746
	1.6	Tube connection	0.045	0.052	49	Vac - 2 ²⁾	FFKM	PVDF	leads, 0.5 m	024/DC	137 764
									rectangular plug	024/DC	139 147
	1.6	Sub-base	0.045	0.052	49	Vac - 2	FFKM	PEEK	leads, 0.5 m	012/DC	137 744
Spade connector sideways									024/DC	137 745	
1.6	Sub-base	0.045	0.052	49	Vac - 2	FFKM	PEEK	leads, 0.5 m	012/DC	137 744	
								Spade connector sideways	024/DC	137 741	
B  2/2-way valve, direct-acting, normally open	1.6	G 1/8	0.05	0.058	54	Vac - 2	FFKM	PVDF	Spade connector sideways	024/DC	137 747
T  3/2-way valve, direct-acting, universal functions	1.5	UNF 1/4-28	0.03	0.035	33	Vac - 2	FFKM	ETFE	leads, 0.5 m	024/DC	137 779
	1.6	G 1/8	0.05	0.058	54	Vac - 2	FFKM	PVDF	leads, 0.5 m	024/DC	137 771
									rectangular plug	024/DC	139 149
									Spade connector sideways	024/DC	137 769
	1.6	Tube connection	0.045	0.052	49	Vac - 2	FFKM	PVDF	leads, 0.5 m	012/DC	137 782
									rectangular plug	024/DC	139 150
									Spade connector sideways	012/DC	137 781
	1.6	Sub-base	0.045	0.052	49	Vac - 2	FFKM	PEEK	leads, 0.5 m	024/DC	137 768
									rectangular plug	024/DC	139 148
Spade connector sideways									012/DC	137 766	
1.6	Sub-base	0.045	0.052	49	Vac - 2	FFKM	PEEK	Spade connector sideways	024/DC	137 765	

¹⁾ Overpressure with respect to atmospheric pressure. On request different pressure ranges available.

²⁾ Maximum back pressure 1 bar.

i Other versions on request

Dimensions [mm]

Threaded port version (G1/8, NPT1/8)
with rectangular plugThreaded port version (UNF 1/4-28)
for cable plugTube connection
for cable plugManifold mount version
with flying leads**Classification of fluid connections**

2/2-way-valve, normally closed (circuit function A)
inflow at "NC"-connector

2/2-way-valve, normally closed (circuit function B)
inflow at "NO"-connector

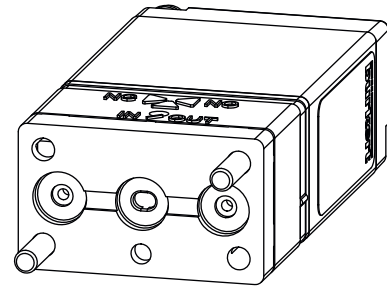
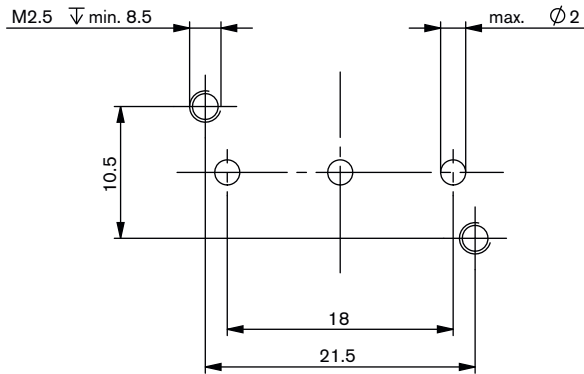
3/2-way-valve, normally open (circuit function T)
inflow at "NO"-connector

Flange interfaces at page 5.

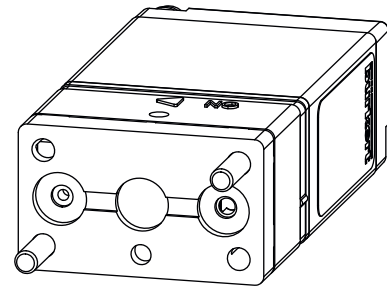
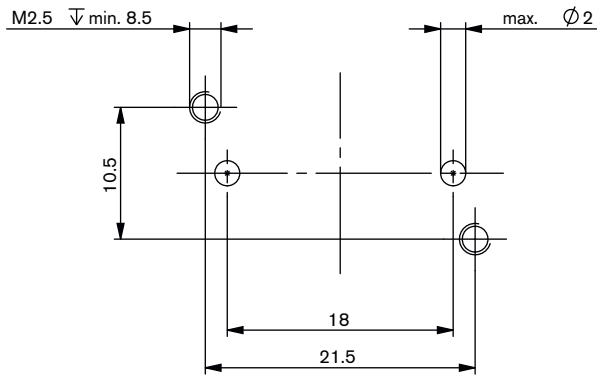
- * Other screw length on request.
- Self-tapping screws on request.
- When selecting a connection plate the screw head overtap has to be considered.

Overview flange interfaces 16 x 27 mm

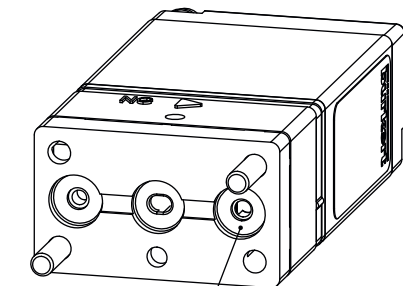
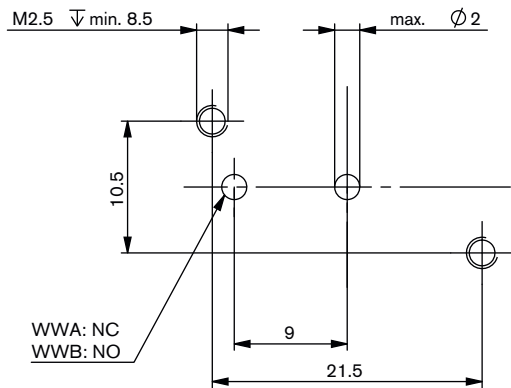
bürkert flange interface FB23 - 3-way (standard)



bürkert flange interface FB43 - 2-way (standard)



bürkert flange interface FB33 - 2-way (low dead volume). not in ordering chart - on request





hole not it use

i On request available with anti-twist device

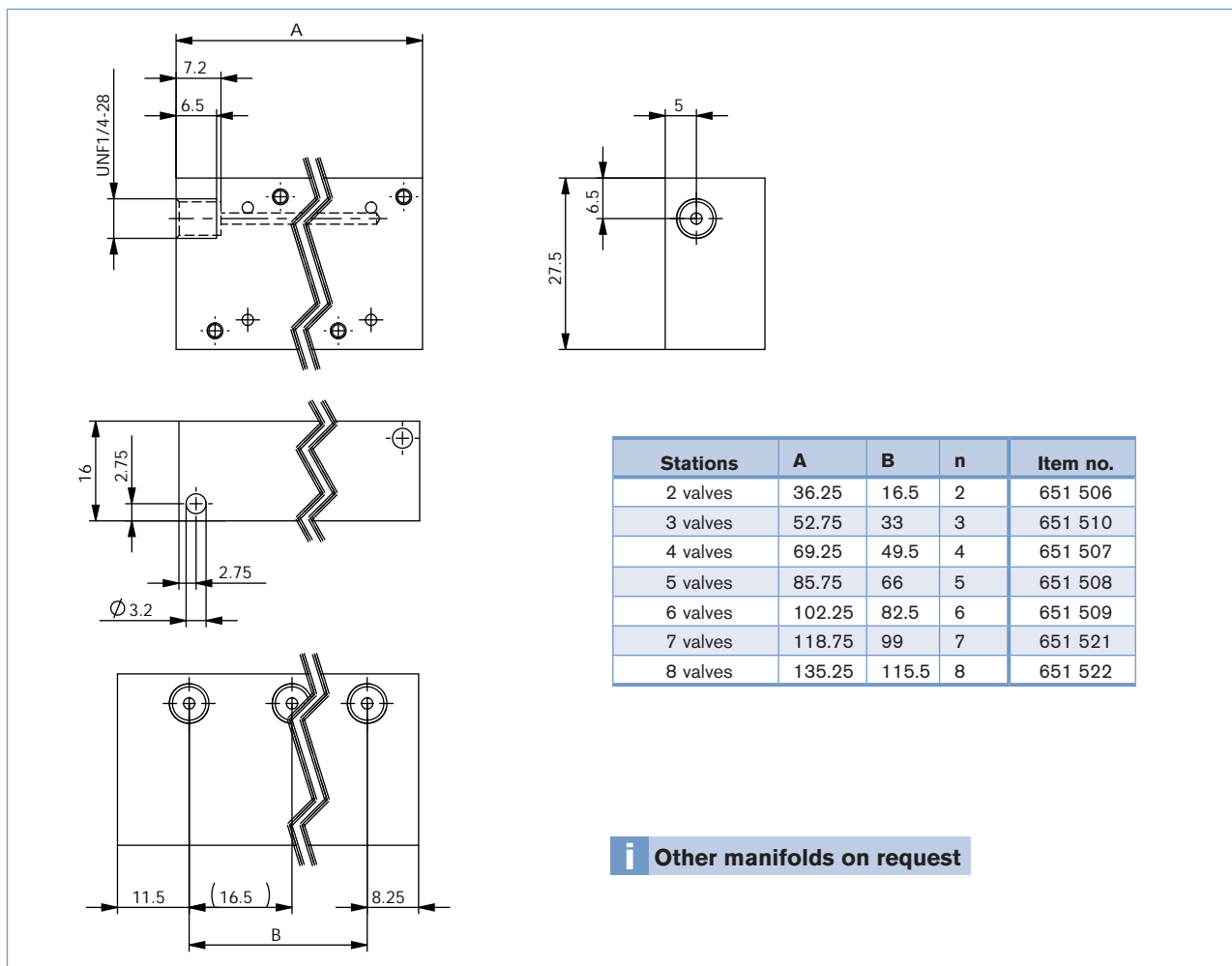
Ordering chart for Accessories

Cable plug Type 2506 acc. to DIN EN 175301-803 Form C, with flat seal and fixing screw, without cable

	Cable plug Type 2506	Voltage	Item no.
	Standard without circuitry	0-250V/UC	008 353
	With LED	12-24V/DC	008 402
	With LED and varistor	12-24V/DC	008 408
	With rectifier, LED and varistor	12-24V/UC	008 354

	Rectangular cable plug Type 2505	Item no.
	With 3m cable	252 572
	With 300 mm flying leads	262 346
	With 2 single contacts	644 067

Manifolds in PEEK for Bürkert flange interface 16 x 27 2-way [mm]



To find your nearest Bürkert facility, click on the orange box →



In case of special application conditions, please consult for advice.

We reserve the right to make technical changes without notice.

1509/5_EU-en_00891769

