

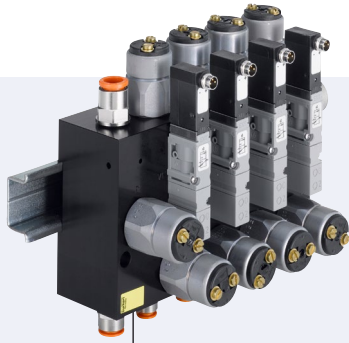
По вопросам продаж и поддержки обращайтесь:

Архангельск (8182)63-90-72	Краснодар (861)203-40-90	Рязань (4912)46-61-64
Астана (7172)727-132	Красноярск (391)204-63-61	Самара (846)206-03-16
Белгород (4722)40-23-64	Курск (4712)77-13-04	Санкт-Петербург (812)309-46-40
Брянск (4832)59-03-52	Липецк (4742)52-20-81	Саратов (845)249-38-78
Владивосток (423)249-28-31	Магнитогорск (3519)55-03-13	Смоленск (4812)29-41-54
Волгоград (844)278-03-48	Москва (495)268-04-70	Сочи (862)225-72-31
Вологда (8172)26-41-59	Мурманск (8152)59-64-93	Ставрополь (8652)20-65-13
Воронеж (473)204-51-73	Набережные Челны (8552)20-53-41	Тверь (4822)63-31-35
Екатеринбург (343)384-55-89	Нижний Новгород (831)429-08-12	Томск (3822)98-41-53
Иваново (4932)77-34-06	Новокузнецк (3843)20-46-81	Тула (4872)74-02-29
Ижевск (3412)26-03-58	Новосибирск (383)227-86-73	Тюмень (3452)66-21-18
Казань (843)206-01-48	Орел (4862)44-53-42	Ульяновск (8422)24-23-59
Калининград (4012)72-03-81	Оренбург (3532)37-68-04	Уфа (347)229-48-12
Калуга (4842)92-23-67	Пенза (8412)22-31-16	Челябинск (351)202-03-61
Кемерово (3842)65-04-62	Пермь (342)205-81-47	Череповец (8202)49-02-64
Киров (8332)68-02-04	Ростов-на-Дону (863)308-18-15	Ярославль (4852)69-52-93

Единый адрес: btk@nt-rt.ru **Веб-сайт:** www.burkert.nt-rt.ru

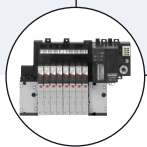
**ПНЕВМАТИКА,
АВТОМАТИКА**

Redundancy valve block for safety related shut-off function

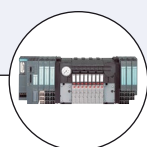


- Redundancy functions possible
- Pressure switch included
- DIN-rail mounting

Type MKRS can be combined with...



Type 8640
Valve island



Type 8644
AirLINE



Type 6524
Valve with a second connection



Type 6525
Valve with a second connection

The Type MKRS extended the various usability of valve island type 8640 as well as the automation system type 8644. With new Type MKRS in combination with valve Types 6524 and 6525 redundancy valve functions can be installed. Thereby according to machinery directives EN ISO 13849 higher safety functionalities up to performance level d can be reached.

Technical data

Valve block

Body material	Aluminium anodized
Supply port connection	D8
Working port	D6
Protection class	IP20
Protection class	3 acc. to VDE 0580
Installation	Arbitrary, preferably horizontal on the DIN-rail

Valves

Body material	PA
Circuit function	3/2 way valve (normally closed)
Operating voltage	24 V
Power consumption	0.8 W
Electr. connection	Circular connector M8
Medium	Lubricated, non-lubricated and dry compressed air; neutral gases (5µm filter recommended)
Pilot pressure	2.5 - 10 bar
Medium temperature	- 10 ... + 50 °C
Ambient temperature	- 10 ... + 55 °C
Manual override	no
Response times	Opening: 15 ms
(Measuring acc. to ISO 12238)	Closing: 20ms

Diaphragm pressure switch

Function	Opener (normally closed)
Body material	Steel zinc-coated CrVI-free
Operating voltage	max. 42 V
Electr. Connection	Screw connection M3
Seal material	NBR
Adjustment range (tolerance at room temperature)	1 - 10 bar (+ 0.5 bar)
Switching frequency	< 200 / min ⁻¹

Dimensions [mm]

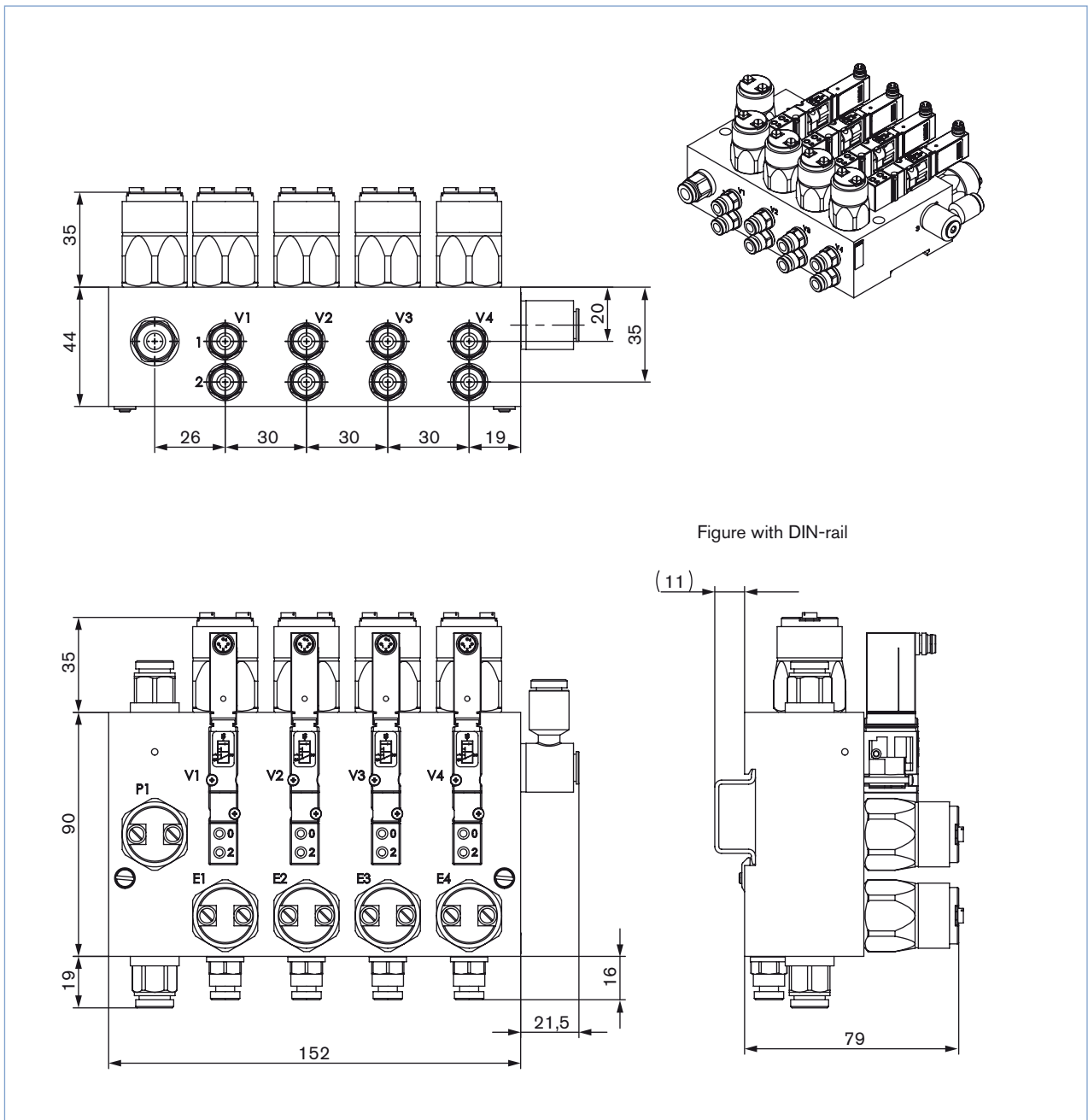
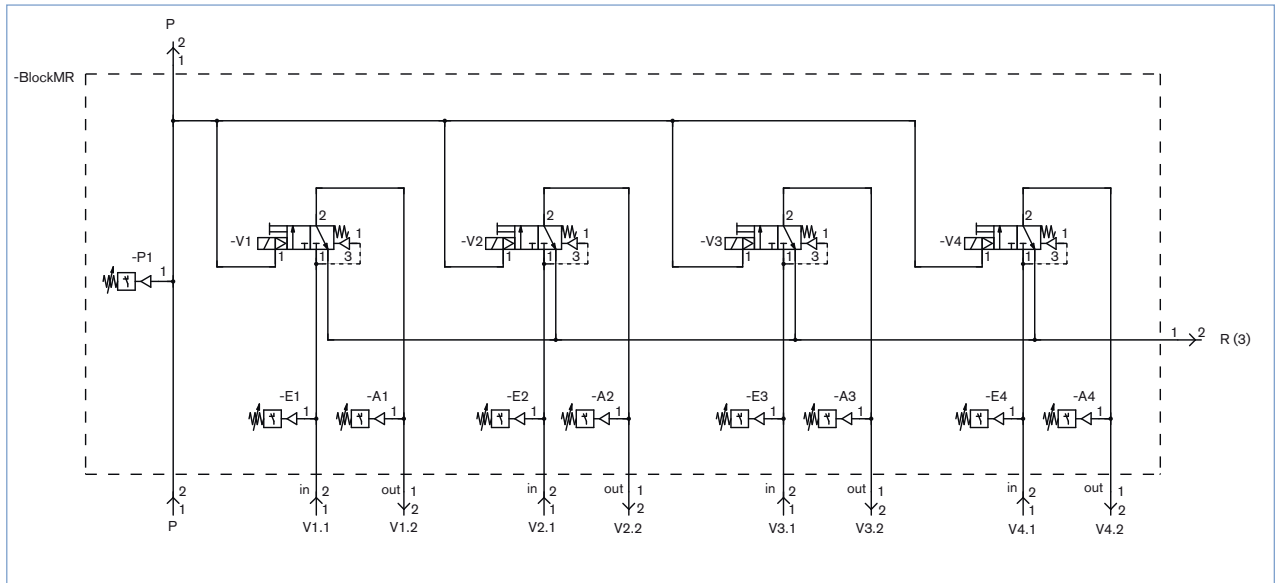


Figure with DIN-rail

Pneumatic circuit diagram



Ordering chart for standard version

	Article no.	Article no.
Article no.	287280	287281
Description	Fully equipped	Partly equipped
Quantity of valve slots	4	4
Quantity of redundancy valves	4	2
Pressure monitoring in the P-channel	yes	yes
Pressure monitoring per valve		
upstream valve	yes	yes
downstream valve	yes	yes
External pilot air	yes	yes

