



Advantages/Benefits

- ▶ Namur interface - G 1/4
- ▶ When de-energized, pressure port connected to outlet 2 outlet 4 exhausted.
- ▶ High flow rate
- ▶ Long service life
- ▶ Applications with lubricated or unlubricated air
- ▶ Lockable manual override standard
- ▶ No "stick-slip-effect"
- ▶ EEx ib IIC T6 (Type 550)
EEx ed IIC T5 (Type 650)

Design/Function

The Type 450 is a high-quality spool valve, combining the advantages of elastomeric and metal-to-metal sealed valves.

The valve has a long and reliable service life on lubricated and unlubricated air. The self-cleaning action on the seal makes it insensitive to dirt particles in compressed air.



There is no stiction with intermittent use.

Due to the low power consumption, the epoxy-encapsulated solenoid can be controlled via a PLC. All of the solenoid actuators are available in wide-band voltage ranges, with combined 50 and 60Hz operation for AC versions.

Applications

- Pneumatic control
- Cylinder control in machine engineering
- Actuated valve control
- Safety interlocks

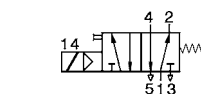
5/2-Way Spool Valve with Namur Interface

Type 450
Type 550 
Type 650 

Technical Data

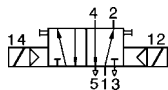
Circuit Function

H 5/2-way valve,
when de-energized, pressure port 1
connected to outlet 2, outlet 4
exhausted.



Spring return

5/2-way valve,
when de-energized, pressure port 1
connected to outlet 2, outlet 4
exhausted.



Impulse valve

Body Materials

Aluminium,
Internal parts aluminium and stainless steel

Specifications

Orifice 6 mm
Flow 750 l/min.

Operating Data (Valve)

Seal Materials / Fluids Handled / Temp.-Range

POM/ lubricated or unlubricated air -10 to
NBR +70 °C¹⁾

¹⁾ for Types 550 and 650: to +60 °C

For more detailed information please refer to resistance
chart (Leaflet-No. 1896009).

Max. ambient temperature Type 450: +55 °C
Type 550,650: +40 °C

Port connection Namur sub-base - G 1/4

Operating Data (Actuator)

Operating voltages

Type 450 24-28, 230-250 V/ 50, 60 Hz
Type 550 24 V/=
Type 650 24, 110, 220, 240 V/UC (universal
current)

Note for Type 650 A bridge rectifier has been incorpo-
rated in the solenoid system, which
makes it suitable for both AC and DC
operation. (Universal current to DIN
40700).

Voltage tolerance ±10 %

Power consumption Type 450: 2,5 to 4 Watt
Type 650: 5 Watt

Duty cycle 100% continuously rated

Rating with cable plug, cable or
junction box IP 65

Installation / Accessories



Installation as required

Electrical connection

- Type 450, 550 • cable plug for 6-7 mm ø cable
(supplied as standard)
- Type 650 • moulded-in cable H05RN-F3
G, 3 x 0,75 mm², length 3 m, with
tension relieving cable gland
- junction box without safety fuse

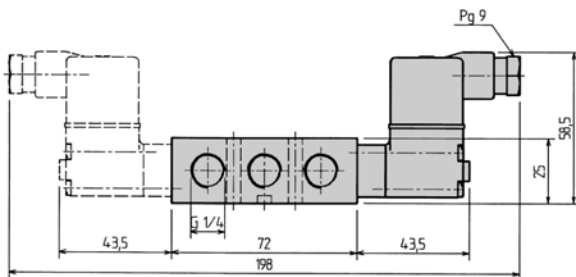
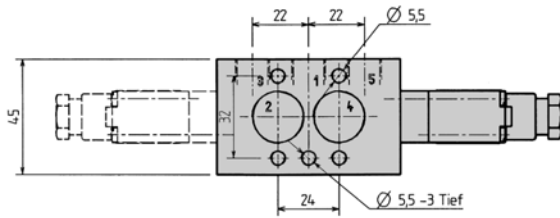
Safety fuse A safety fuse with a medium
response time and rated according to
the nominal current should be incorpo-
rated in the circuit.

5/2-Way Spool Valve with Namur Interface

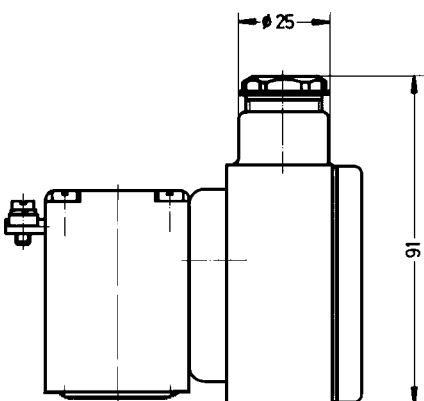
Type 450
Type 550 
Type 650 

Dimensions in mm

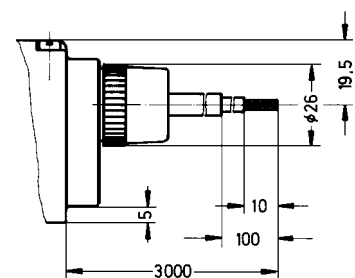
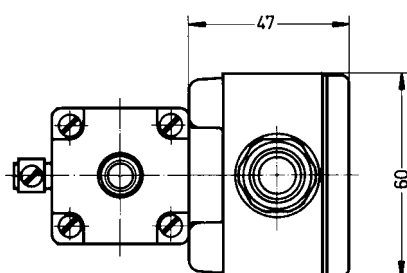
Version with M5 Mounting screws



Ex-version with junction box





With moulded-in cable



Note

The solenoid systems of the Types 550 and 650 are mounted vertically to the spool valve body.

5/2-Way Spool Valve with Namur Interface

Type 450
Type 550 
Type 650 

Ordering Chart (Other Versions on Request)

Circuit Function	Orifice DN [mm]	Flow Rate Air Q _{Nn} [l/min]	Port Con- nec- tion	Pressure Range [bar]	Approval PTB.-No. Type 550: Ex-87.B.2023 Type 650: Ex-89.C.1034	Weight [kg]	Voltage/ Frequency [V/Hz]	Order-No.
H ¹⁾	6,0	750	Namur	2-8	- Type 450	0,32	024-30/=	031 455 L
					- Type 450	0,32	24-28/50,60	031 456 M
					- Type 450	0,32	230-250/50,60	031 458 X
H ¹⁾	6,0	750	Namur	2-8	Ex ed Type 650	0,62	024/UC	031 649 E
					Ex ed Type 650	0,62	024/UC	031 688 N ³⁾
					Ex ed Type 650	0,62	110/UC	031 650 B
					Ex ed Type 650	0,62	110/UC	031 489 P ³⁾
					Ex ed Type 650	0,62	220/UC	031 651 Y
					Ex ed Type 650	0,62	220/UC	031 490 L ³⁾
					Ex ed Type 650	0,62	240/UC	031 652 Z
H ¹⁾	6,0	750	Namur	2-7	Ex ib Type 550	0,32	24/=	031 614 K
H ²⁾	6,0	750	Namur	2-7	Ex ed Type 650	0,62	24/UC	031 484 A
							110/UC	031 485 B
							220/UC	031 593 F
							220/UC	031 486 C ³⁾

¹⁾ With spring return, ²⁾ Impulse operated, ³⁾ With junction box without safety fuse

Accessories

Code	Order-No.
Rubber blanking gasket for 3/2-way Version (for conversion from 5/2- to 3/2-way)	015 411 G

Accessories for Type 650

Safety Fuses	[mA]	Order-No.
24 V	400	007 073 Z
110 V	100	007 068 C
220/240 V	63	007 067 T

Electrical Accessories for Type 550

Code / Specification Version	Explosion Group	Max. Safety Values		Nominal Voltage [V]	Nom. Curr. [mA]	Polarity	Approval No.	Order-No.
		Voltage [V]	Current [mA]					
Safety barrier Coil version	IIC	28	110	24	40	negative polarity	Ex-78/2007X	006 562 X
						positive polarity	Ex-78/2007X	006 700 N
Installation accessory for barrier								007 152 V

In case of special requirements
please consult for advice.

We reserve the right to make technical
changes without notice.

710-GB/ 2-0154



Type 5411 can be combine with...



Type 2508

Cable plug



Type 2510/11

Cable plug ASI



Type 2012

Globe valve



Type 2030

Diaphragm valve

3/2-Way Pneumatic Solenoid Valve

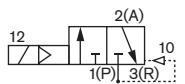
- Robust servo assisted piston valve
- Service friendly manual override
- Single or block assembly
- Explosion-proof versions

Type 5411 is a pilot operated 3/2-way solenoid valve with manual override as standard. The housing includes servo piston seals with the seat seal. Through pilot channels the servo piston is either loaded with input pressure or released. To switch a minimum pressure difference of 1 bar is required.

The vent port is integrated as a sintered bronze silencer directly in the valve housing.

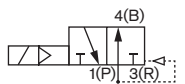
The valves can be combined (up to 6 valves) on a single-channel manifold with common pressure supply.

Circuit function C



3/2-way valve, servo-assisted, outlet 2 normally relieved

Circuit function D



3/2-way valve, servo-assisted, outlet 2 normally pressurized

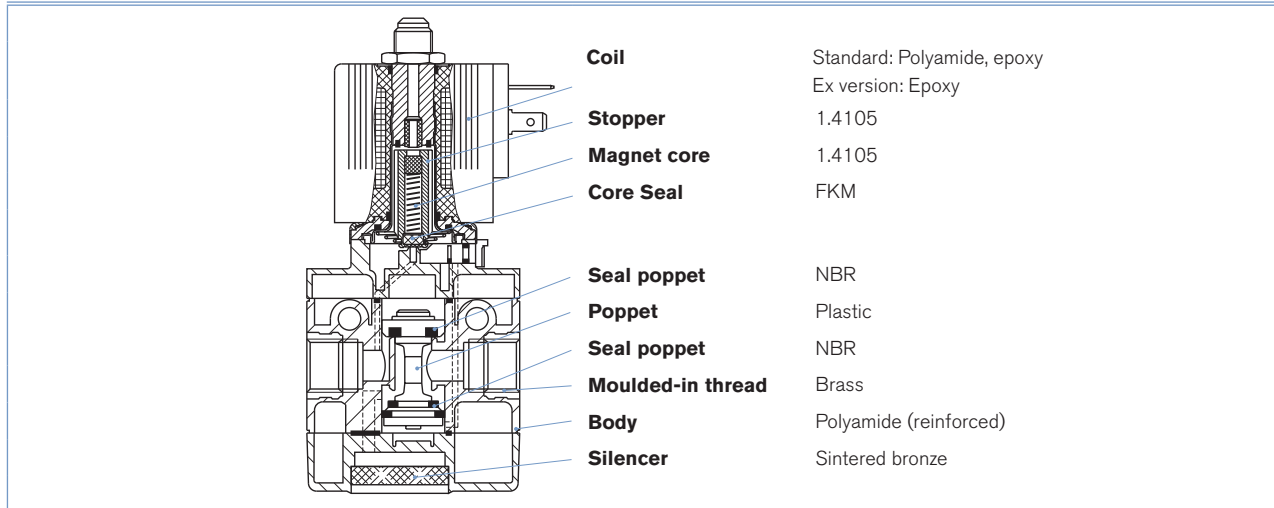
Technical data	
Orifice	DN 6.0 mm
Port connection	G 1/4
Body material	Polyamide (reinforced) with moulded-in brass threads
Coil material	Polyamide, Epoxy
Seal material	NBR
Medium	neutral medium, e.g. lubricated or unlubricated compressed air
Air pressure quality	ISO 8573-1:2010, class 7.4.4*
Medium Temperature	-10 to +60 °C
Medium pressure	1 to 10 bar
Ambient Temperature	max. 55 °C
QnN-Value air	900 l/min
Operating voltage	024 V DC 024/110/230 V/50-60Hz
Voltage tolerance	± 10 %
Power consumption version with V DC voltage version with V AC voltage	2 W 11 VA (inrush), 6 VA (hold)
Response time opening closing	50 ms (Pressure rise 0 to 90%) 30 ms (Pressure drop 100 to 10%)
Duty cycle	100 % continuously rated
Electrical connection	Tag connectors according to DIN 43650 (previously DIN 43650) Form A for cable plug Type 2508
Schutzart	IP65 with cable plug
Installation	As required, preferably with solenoid system upright; Air exhausted from the relief port with pressed sintered bronze silencer must not be impeded.

Flow rate: QnN-value air [l/min]: Measured at +20°C, 6 bar pressure at valve inlet and 1 bar pressure difference.

Pressure ranges [bar]: Overpressure to the atmospheric pressure

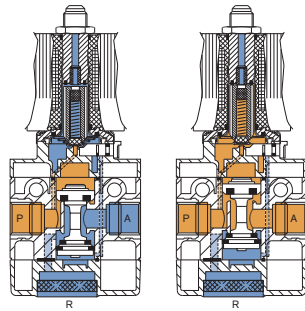
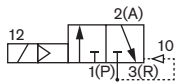
* To prevent freezing of the expanded compressed air, the pressure dew point must be at least 10 K lower than the temperature of the medium.

Materials



Circuit function C and D

Circuit function C

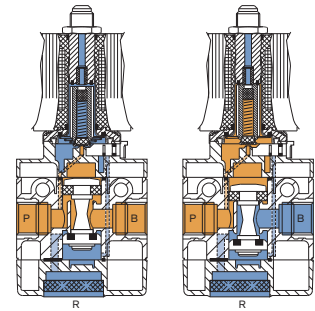
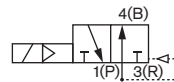
*Position power-off:*

The space below the piston is normally relieved to the outside via the pilot valve. The compressed air from the connection (P) pushes the piston downward and closes the upper seat, the connection (A) is relieved via the lower seat.

Position after switching on the current:

The pilot valve opens the pilot bore and exposes the piston from below to pressure. Through the large surfaces on the actuation side, the piston is pushed up, closes the lower seat, and opens the connection from (P) to (A) through the upper seat.

Circuit function D

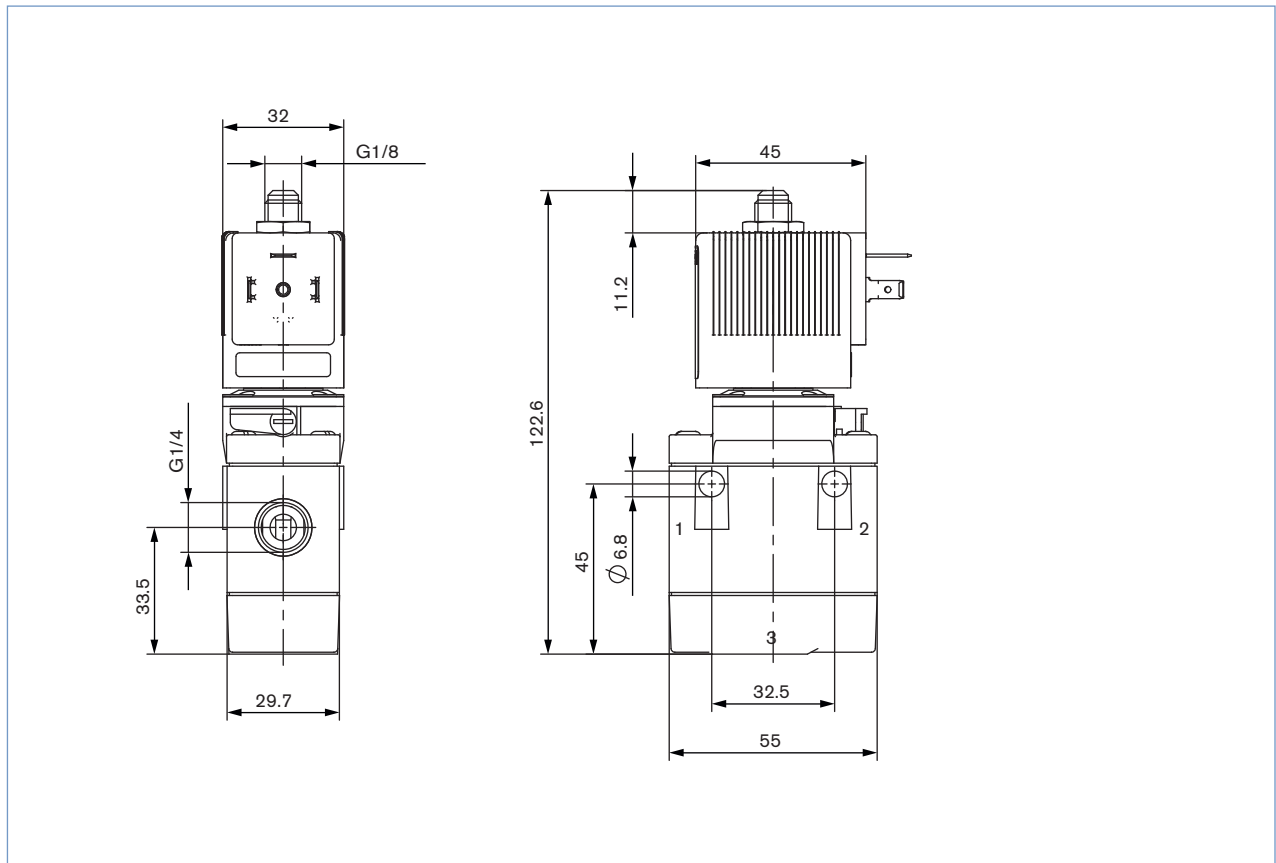
*Position power-off:*

The space above the piston is normally relieved to the outside via the pilot valve. The compressed air from the connection (P) pushes the piston upward and closes the lower seat, the connection from (P) to (B) is open.

Position after switching on the current:

The pilot valve opens the pilot bore and exposes the piston from above to pressure. Through the large surfaces on the actuation side, the piston is pushed down, closes the upper seat, the connection (B) is relieved via the lower seat.

Dimensions - standard version [mm]



Ordering chart - standard versions

Version with manual override, NBR seal

	Circuit function	Orifice [mm]	Port connection	Q _N value air l/m	Pressure range [bar]	Power consumption [W]	Voltage/ Frequency [V/Hz]	Item no.
C 	3/2-way valve, servo-assisted, outlet 2 normally relieved	6	G 1/4	900	1-10	2	024/DC	134 607
							024/50-60	134 608
							110/50-60	134 609
							230/50-60	134 610
D 	3/2-way valve, servo-assisted, outlet 2 normally pressurized	6	G 1/4	900	1-10	2	024/DC	134 611
							024/50-60	134 612
							110/50-60	134 613
							230/50-60	134 614

Note: To switch a pressure difference of 1 bar is required.

Type 5411 – ATEX/IECEX version

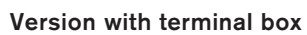


The approval Ex m is achieved by the mounting of an approved push-over coil. The cable connection and the cable are non-detachable and sealed together with the valve. The valves can be used individually or in blocks.

Technical data	
Body material	Polyamide
Seal material	NBR
Medium	neutral medium, e.g. lubricated or unlubricated compressed air
Air pressure quality	ISO 8573-1:2010, class 7.4.4*
Medium temperature	-10°C to +60°C
Ambient temperature	
Single mounting	-30°C to +60°C
Block mounting	-30°C to +50°C
Port connection	G1/4
Operating voltage	24/ 110/ 230 V UC
Voltage tolerance	+10%
Duty cycle	100 % continuously rated
Electrical connection	3m cable, moulded Terminal box (without fuse), moulded
Protection class	IP65
Type of protection	
with moulded cable	PTB 14 ATEX 2023 X / IECEx PTB 14.0049 X II 2G Ex mb IIC T5 Gb II 2D Ex mb IIIC T 100°C Db
with terminal box	PTB 02 ATEX 2094 X / IECEx PTB 09.0064 X II 2G Ex e mb IIC T4,T5 Gb
Installation	As required, preferably with actuator upright

* To prevent freezing of the expanded compressed air, the pressure dew point must be at least 10 K lower than the temperature of the medium.

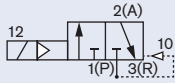
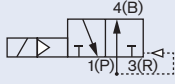
Version wih moulded cable (3 m)



Ordering charts - ATEX/IECEx versions

Version with manual override, NBR seal and moulded cable (3 m)

The maximum fluid temperature may never exceed the permissible temperature class (T4 135 °C, T5 100 °C, T6 85 °C) minus 5 K.

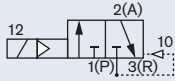
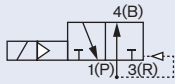
	Circuit function	Orifice [mm]	Port connection	Q _{Nn} value air l/m	Pressure range [bar]	Power consumption [W]	Voltage/ Frequency [V/Hz]	Item no.
C 	3/2-way valve, servo-assisted, outlet 2 normally relieved	6	G 1/4	900	1-10	3	024/UC	566 767
							110/UC	x
							230/UC	x
D 	3/2-way valve, servo-assisted, outlet 2 normally pressurized	6	G 1/4	900	1-10	3	024/UC	x
							110/UC	x
							230/UC	x

Note: To switch a pressure difference of 1 bar is required.

x on request

Version with manual override, NBR seal and terminal box (without fuse)

The maximum fluid temperature may never exceed the permissible temperature class (T4 135 °C, T5 100 °C, T6 85 °C) minus 5 K.

	Circuit function	Orifice [mm]	Port connection	Q _{Nn} value air l/m	Pressure range [bar]	Power consumption [W]	Voltage/ Frequency [V/Hz]	Item no.
C 	3/2-way valve, servo-assisted, outlet 2 normally relieved	6	G 1/4	900	1-10	5	024/UC	566 036
							048/UC	x
							110/UC	x
							230/UC	566 037
D 	3/2-way valve, servo-assisted, outlet 2 normally pressurized	6	G 1/4	900	1-10	5	024/UC	x
							048/UC	x
							110/UC	x
							230/UC	x

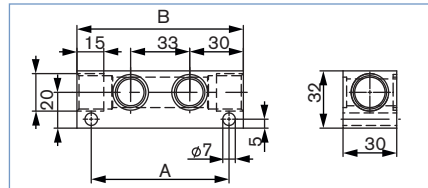
Note: To switch a pressure difference of 1 bar is required.

x on request

Ordering chart for accessories

Manifold in Aluminium with banjo bolts and seals

Manifold	Hole spacing A	Total length B	Item no.
2 valves	77	93	005 811
3 valves	110	126	005 717
4 valves	143	159	005 843
5 valves	176	192	005 776
6 valves	209	225	005 718



Cable plug Type 2508 acc. to DIN 43650 Form A

Description	Voltage	Item no.
Standard cable plug	0-250 V AC/DC	008 376
with LED	12-24 V AC/DC	008 360
with LED	100-120V AC/DC	008 361
with LED and varistor	12-24 V AC/DC	008 367
with LED and varistor	100-120V AC/DC	008 368
with LED and varistor	200-240 V AC/DC	008 369

Note: The delivery of a cable plug includes the flat seal and fixing screw.

A wide selection of further cable plugs is available. Please refer to data sheet Type 2508.

[More info.](#)

Fuse for terminal box

Voltage [V]	Max. power [A]	Item no.
024	0.4	153 734
230	0.63	153 717

To find your nearest Bürkert office, click on the orange box →

In case of special application conditions, please consult for advice.

We reserve the right to make technical changes without notice.
© Christian Bürkert GmbH & Co. KG

1503/1_EU-en_00891715



Type 5413 can be combined with ...



Type 2508

Cable plug



Type 2510/11

Cable plug ASI



Type 2012

Globe valve



Type 2030

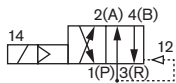
Diaphragm valve

4/2-Way Pneumatic Solenoid Valve

- Robust servo assisted piston valve
- Service friendly manual override
- Single or block assembly
- Explosion-proof versions

Type 5413 is a pilot operated 4/2-way solenoid valve with manual override as standard. A 3/2 way solenoid pilot valve allows control. The valve consists basically of two assembled 3/2-way valves for ports A and B with a counter built-in servo piston with seat seals. Through pilot channels, the servo piston is operated at the inlet pressure and pushed either apart or towards the valve centre. To switch a minimum pressure difference of 1 bar is required.

Circuit function G



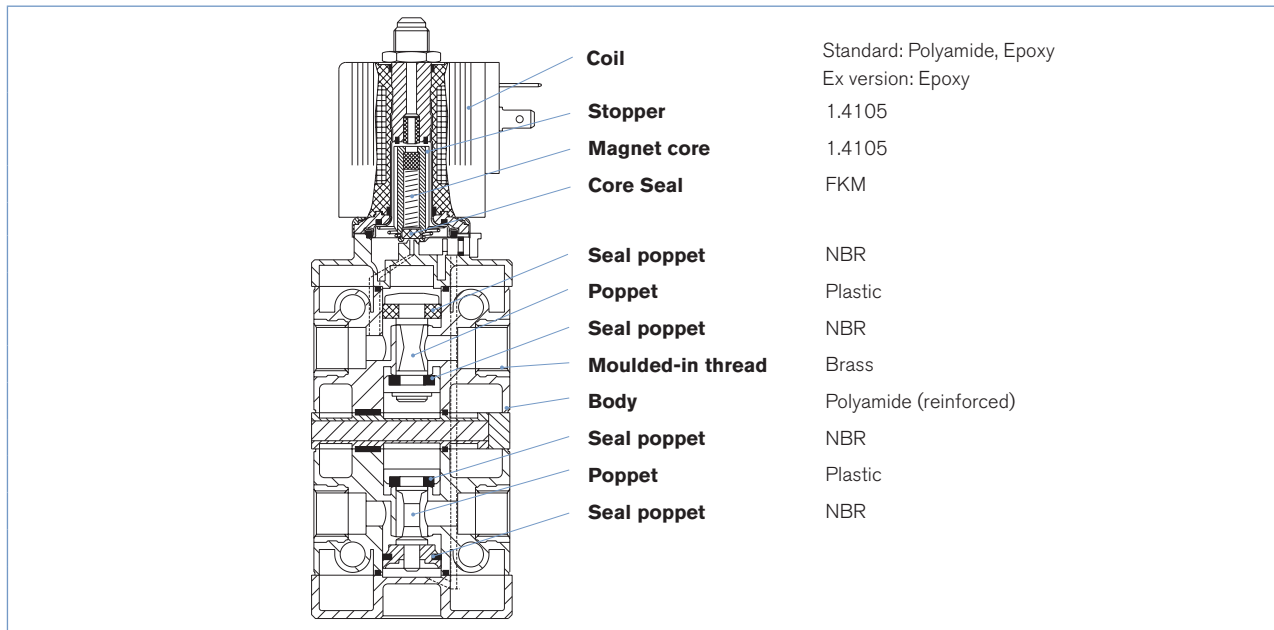
4/2-way valve, normally pressure port 1 connected to outlet 2, outlet 4 relieved

Technical data	
Orifice	DN 6.0 mm
Port connection	G 1/4
Body material	Polyamide (reinforced) with moulded-in brass threads
Coil material	Polyamide, Epoxy
Seal material	NBR
Medium	neutral medium, e.g. lubricated or unlubricated compressed air
Air pressure quality	ISO 8573-1:2010, class 7.4.4*
Medium Temperature	-10 to +60 °C
Medium pressure	1 to 10 bar
Ambient Temperature	max. 55 °C
QnN-Value air	900 l/min
Operating voltage	024 V DC 024/110/230 V/50-60Hz
Voltage tolerance	± 10 %
Power consumption	version with V DC version with V AC
	2 W 11 VA (inrush), 6 VA (hold)
Response time	opening closing
	50 ms (Pressure rise 0 to 90%) 30 ms (Pressure drop 100 to 10%)
Duty cycle	100 % continuously rated
Electrical connection	Tag connectors according to DIN EN 175301-803 (previously DIN 43650) Form A for cable plug Type 2508
Protection class	IP65 with cable plug
Installation	As required, preferably with solenoid system upright; Air exhausted from the relief port with pressed sintered bronze silencer must not be impeded.

Flow rate: QnN-value air [l/min]: Measured at +20°C, 6 bar pressure at valve inlet and 1 bar pressure difference.
Pressure ranges [bar]: Overpressure to the atmospheric pressure

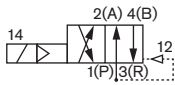
* To prevent freezing of the expanded compressed air, the pressure dew point must be at least 10 K lower than the temperature of the medium.

Materials



Circuit function G

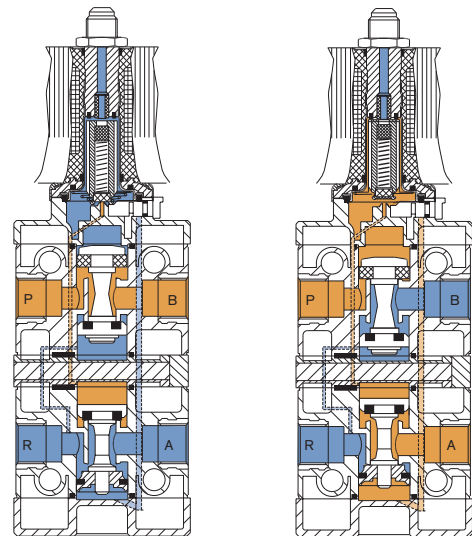
Circuit function G

*Position power-off:*

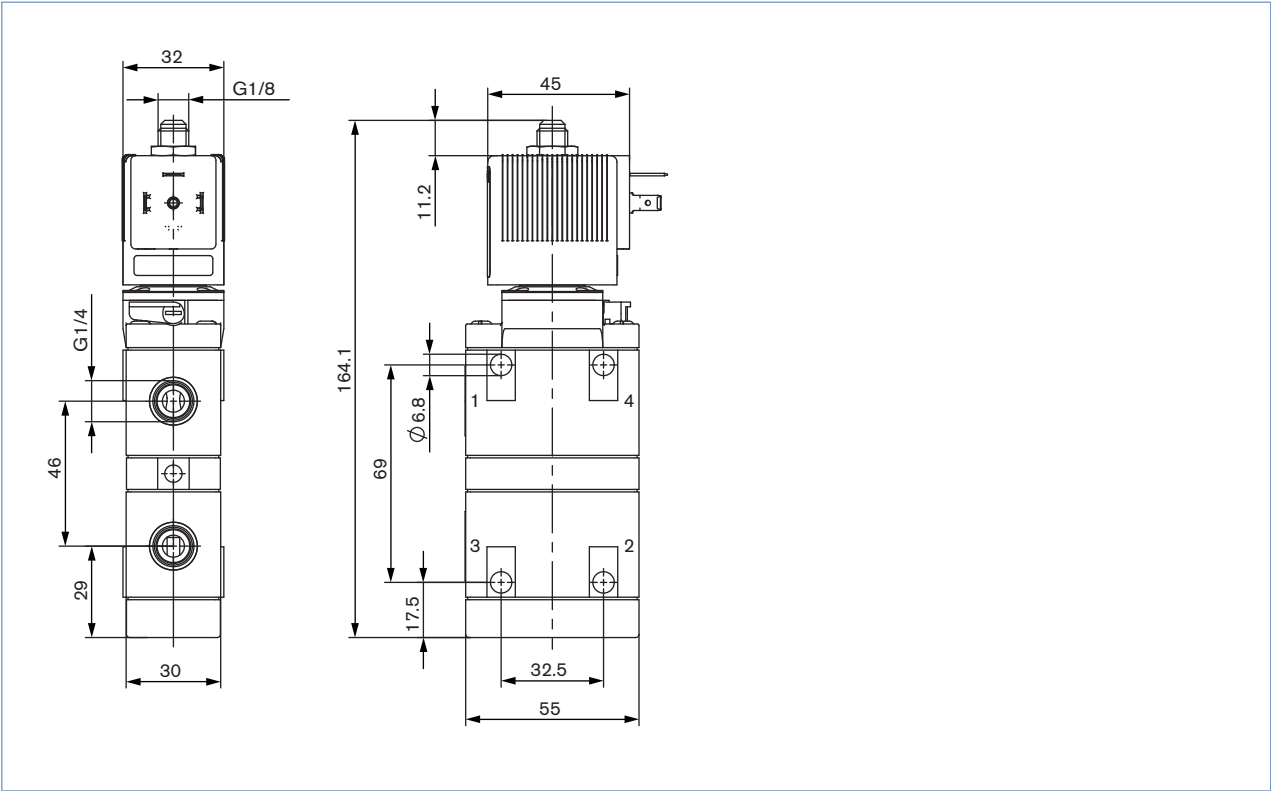
Normally both servo pistons are relieved on the operating side. The servo pistons are pushed apart with the pressure applied on the port (P), the upper piston opens the connection from (P) to (B), and the lower piston opens the connection from (A) to (R).

Position after switching on the current:

The pilot valve opens the pilot bore and exposes both pistons to pressure and pushes them towards the valve centre. The upper piston released the connection (B) to (R), the lower piston opens the connection (P) to (A).



Dimensions for standard version [mm]



Ordering chart

Version with manual override, NBR seal

	Circuit function	Orifice [mm]	Port connection	Q _{Nn} value air l/m	Pressure range [bar]	Power consumption [W]	Voltage/ Frequency [V/Hz]	Item no.
G 	4/2-way valve, normally pres- sure port 1 connected to outlet 2, outlet 4 relieved	6	G 1/4	900	1-10	2	024/DC	134 615
							024/50-60	134 616
							110/50-60	134 617
							230/50-60	134 618

Note: To switch a pressure difference of 1 bar is required.

Type 5413 – ATEX/IECEx version



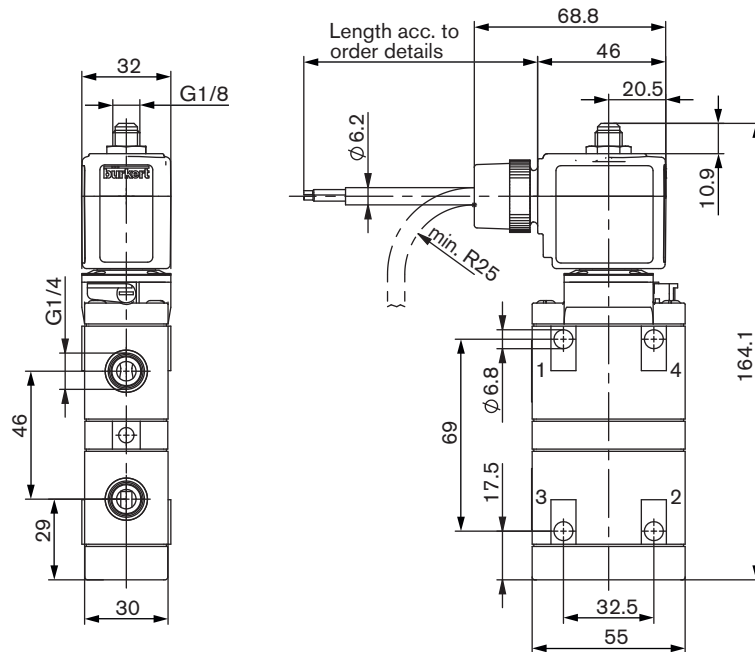
The approval Ex m is achieved by the mounting of an approved push-over coil. The cable connection and the cable are non-detachable and sealed together with the valve. The valves can be used individually or in blocks.

Technical data	
Body material	Polyamide
Seal material	NBR
Medium	neutral medium, e.g. lubricated or unlubricated compressed air
Air pressure quality	ISO 8573-1:2010, class 7.4.4*
Medium temperature	-10°C to +60°C
Ambient temperature	
Single mounting	-30°C to +60°C
Block mounting	-30°C to +50°C
Port connection	G1/4
Operating voltage	24/ 110/ 230 V UC
Voltage tolerance	+10%
Duty cycle	100 % continuously rated
Electrical connection	3m cable, moulded Terminal box (without fuse), moulded
Protection class	IP65
Type of protection	
with moulded cable	PTB 14 ATEX 2023 X / IECEx PTB 14.0049 X II 2G Ex mb IIC T5 Gb II 2D Ex mb IIIC T 100°C Db
with terminal box	PTB 02 ATEX 2094 X / IECEx PTB 09.0064 X II 2G Ex e mb IIC T4, T5 Gb
Installation	As required, preferably with actuator upright

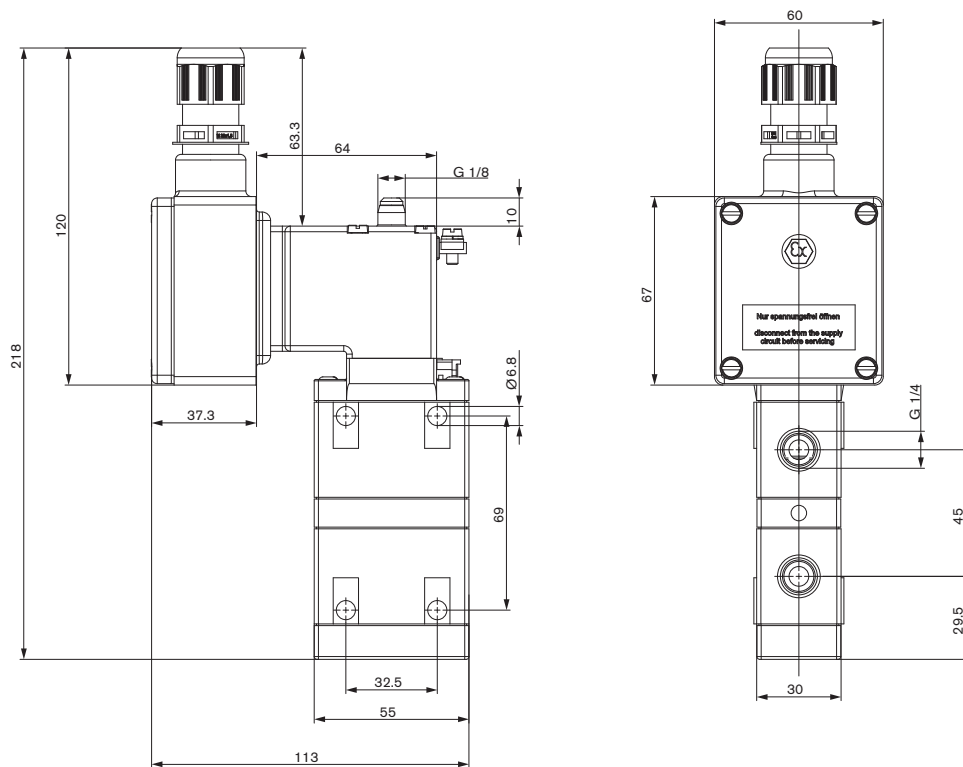
* To prevent freezing of the expanded compressed air, the pressure dew point must be at least 10 K lower than the temperature of the medium.

Dimensions for ATEX/IECEX versions [mm]

Version with moulded cable (3 m)



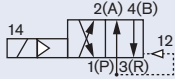
Version with terminal box



Ordering chart for ATEX/IECEx versions

Version with manual override, NBR seal and moulded cable (3 m)

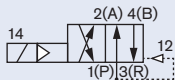
The maximum fluid temperature may never exceed the permissible temperature class (T4 135°C, T5 100°C, T6 85°C) minus 5K.

Circuit function	Orifice [mm]	Port connection	QnN- value air l/m	Pressure range [bar]	Power consumption [W]	Voltage/ Frequency [V/Hz]	Item no.
G  4/2-way valve, normally pressure port 1 connected to outlet 2, outlet 4 relieved	6	G 1/4	900	1-10	3	024/UC	566 775
						110/UC	566 776
						230/UC	566 777

Note: To switch a pressure difference of 1 bar is required.

Version with manual override, NBR seal and terminal box (without fuse)

The maximum fluid temperature may never exceed the permissible temperature class (T4 135°C, T5 100°C, T6 85°C) minus 5K.

Circuit function	Orifice [mm]	Port connection	QnN- value air l/m	Pressure range [bar]	Power consumption [W]	Voltage/ Frequency [V/Hz]	Item no.
G  4/2-way valve, normally pressure port 1 connected to outlet 2, outlet 4 relieved	6	G 1/4	900	1-10	5	024/UC	566 035
						048/UC	x
						110/UC	x
						230/UC	x

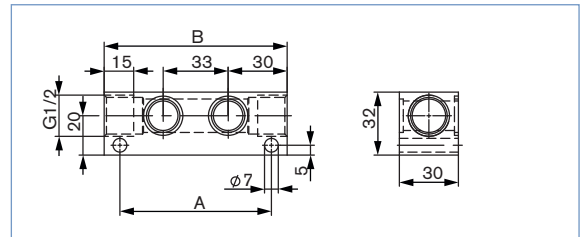
Note: To switch a pressure difference of 1 bar is required.

x on request

Ordering chart for accessories

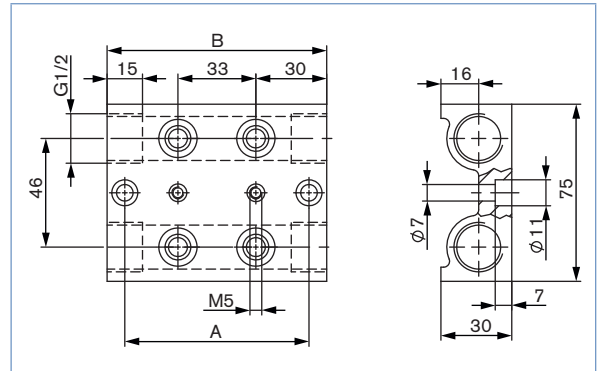
Single channel manifolds (for pressure port) in aluminium with banjo bolts and seals

Manifold	Hole spacing A	Total length B	Item no.
2 valves	77	93	005 811
3 valves	110	126	005 717
4 valves	143	159	005 843
5 valves	176	192	005 776
6 valves	209	225	005 718



Double channels manifolds (for pressure and exhaust port) with mounting screws M5x60 DIN 912 and O-rings 11x2.5

Manifold	Hole spacing A	Total length B	Item no.
2 valves	78	93	005 686
3 valves	111	126	005 688
4 valves	144	159	005 719
5 valves	177	192	005 696
6 valves	210	225	005 626
7 valves	243	258	005 738
8 valves	276	291	005 724
9 valves	309	324	005 739
10 valves	342	357	005 740
11 valves	375	390	005 804
12 valves	408	423	005 700



Cable plug Type 2508 acc. to DIN 43650 Form A

Description	Voltage	Item no.
Standard cable plug	0-250 V AC/DC	008 376
with LED	12-24 V AC/DC	008 360
with LED	100-120V AC/DC	008 361
with LED and varistor	12-24 V AC/DC	008 367
with LED and varistor	100-120V AC/DC	008 368
with LED and varistor	200-240 V AC/DC	008 369

Note: The delivery of a cable plug includes the flat seal and fixing screw.

A wide selection of further cable plugs is available. Please refer to data sheet Type 2508.

[More info.](#)

Fuse for terminal box

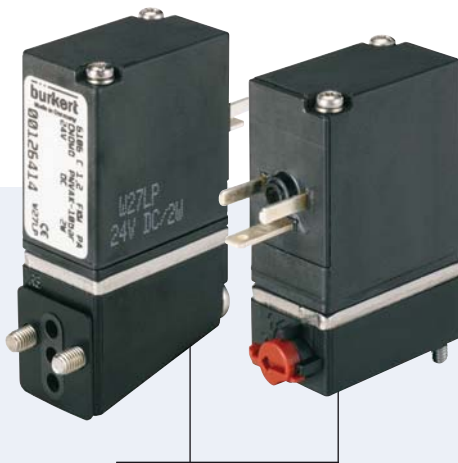
Voltage [V]	Max. power [A]	Item no.
024	0.4	153 734
230	0.63	153 717

To find your nearest Bürkert office, click on the orange box →

In case of special application conditions, please consult for advice.

We reserve the right to make technical changes without notice.
© Christian Bürkert GmbH & Co. KG

1503/2_EU-en_00891716



3/2-way Miniature Rocker Solenoid Valve for pneumatic systems

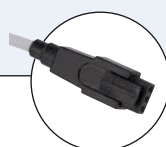
- Direct-acting
- High cycling rate
- Reduced power consumption
- CNOMO and Bürkert flange interface
- ATEX Ex ia on request

Type 6106 can be combined with...



Type 2506

Cable plug



Type 2505

Rectangular
cable plug



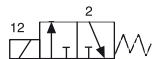
Manifolds

The direct-acting rocker solenoid valve type 6106 is especially designed for neutral gaseous mediums.

The heat input in the medium is minimal, because the housing is separated from the coil by a stainless steel plate.

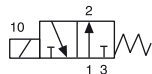
The valves can be mounted directly or also single or manifold mounted. They are used for dosing, filling, mixing and distributing small quantities of medium.

Circuit function C



3/2-way valve, direct acting,
normally closed 2 decreased

Circuit function D



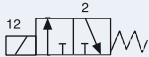


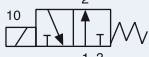
3/2-way valve, direct acting,
normally closed 2, pressurized

Technical data

Orifice	DN 0,9 and 1,2 mm, other on request
Body material	PA (polyamide)
Seal material	FKM
Media	Compressed air, neutral gases (5 µm filtering) technical vacuum
Media temperature	-10 to +55 °C
Ambient temperature	-10 to +55 °C
Port connection	Bürkert flange below, CNOMO flange sideways
Operating voltages	12V, 24V/DC, other voltages on request
Voltage tolerance	±10%
Power consumption	1 W and 2 W
Cycling rate	Approx. 1000/min
Duty cycle	100% continuous rating
Electrical connection	Tag connector sideways acc. to DIN EN 175301-803 (prev. DIN 43650) Form C for cable plug Type 2506, other on request
Protection class	IP 20 with tag connector, IP 65 with cable plug
Installation	As required, preferably with actuator upwards
Response times	acc. ISO 12238:2001; Measured at valve outlet at 6,3 bar and + 20°C
Opening	Approx. 25ms (pressure rise 0 to 10%)
Closing	Approx. 25ms (pressure rise 100% to 10%)

Ordering chart for valves (other versions on request)

All valves with manual override, tag connector sideways, mounting screws and flange seal, without cable plug

Circuit function	Port connection	Orifice [mm]	Q _{Nn} value air 1→2 [l/min]	Q _{Nn} value air 2→3 [l/min]	Pressure range [bar]	Power consumption [W]	Item no. per voltage/frequency [V/Hz]
C 3/2-way valve NC 	Bürkert	0.9	22	25	Vak.-8	1	126 417
	Bürkert	1.2	40	47	Vak.-10	2	126 411
D 3/2-way valve NO 	Bürkert	0.9	22	25	Vak.-8	1	126 421
	Bürkert	1.2	40	47	Vak.-10	2	126 419
C 3/2-way valve NC 	CNOMO	0.9	22	25	Vak.-8	1	126 418
	CNOMO	1.2	33	38	Vak.-10	2	126 414
D 3/2-way valve NO 	CNOMO	0.9	22	25	Vak.-8	1	126 422
	CNOMO	1.2	33	38	Vak.-10	2	126 420

Note: For alternating current, use a cable plug with a suitable rectifier.

Please note that the cable plug has to be ordered separately, see datasheet for Type 2506.

i Weitere Ausführungen auf Anfrage



Port connection

Flange, Cnomo, plug-in coupling, tube body



Approvals

ATEX EEX I, UL /CSA

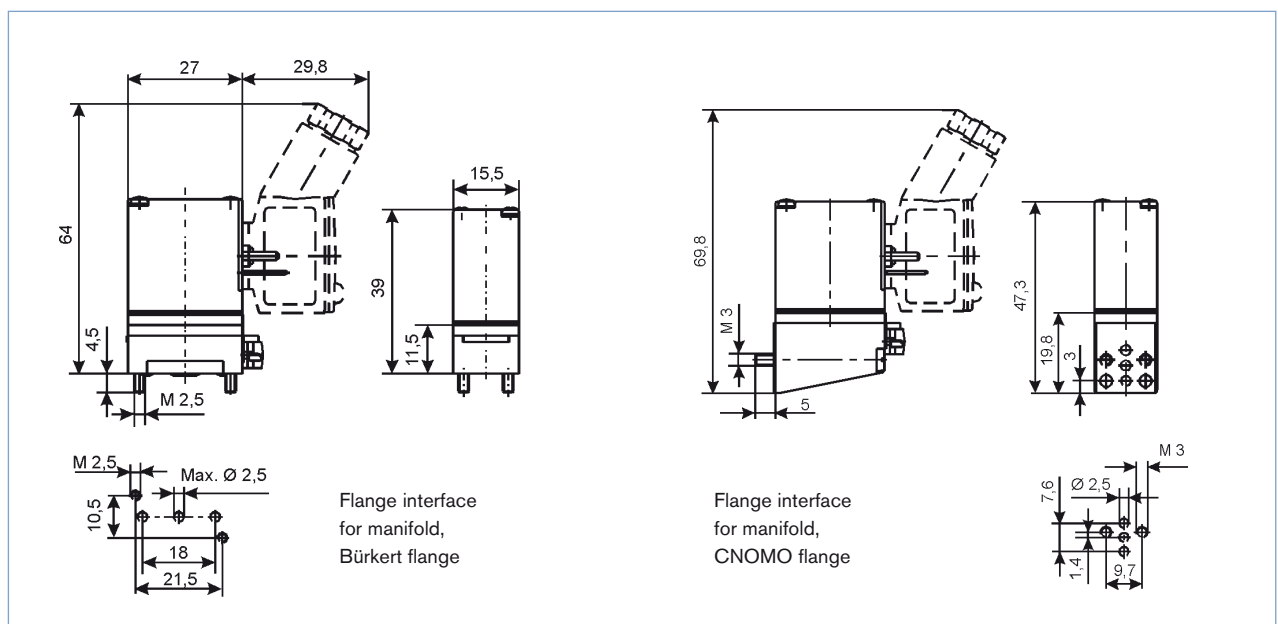


Electrical connections

Industrial plug C, Bürkert Rectangular plug, Circular connector M8; flying leads

Note: Also available as an option without manual override.

Dimensions [mm]



Manifold in aluminium,
black anodised, port connection M5

Item no.

623 873

Technical drawing of manifold 623 873. The drawing includes three views: a front view, a side view, and a top view. The front view shows a rectangular manifold with a width of 14 and a height of 8.5. It features four M5 ports and a central M3 port. The side view shows a width of 12 and a height of 10. The top view shows a width of 27 and a height of 10. The manifold is made of aluminium and is black anodised.

Manifold in aluminium,
black anodised, port connection G 1/8

Item no.

634 917

Technical drawing of manifold 634 917. The drawing includes three views: a front view, a side view, and a top view. The front view shows a rectangular manifold with a width of 16 and a height of 32. It features four G 1/8 ports and a central M2.5 port. The side view shows a width of 22 and a height of 14. The top view shows a width of 10.5 and a height of 10. The manifold is made of aluminium and is black anodised.

Manifold in aluminium, black anodised, port connection G 1/8 und M5

Manifold	A	B	n	Item no.
2-way	60	18	2	658 695
3-way	78	36	3	658 696
4-way	96	54	4	658 697
5-way	114	72	5	658 698
6-way	132	90	6	658 699
8-way	168	126	8	658 700
10-way	204	162	10	658 701
12-way	240	198	12	658 703
Blanking plate kit	for non-configured valve positions			629 327

Manifold for CNOMO flange,
black anodised, port connection M5

Item no.
639 885

The technical drawing includes three views of the manifold:

- Front View (Top Left):** Shows a manifold with a total width of 20 and a total height of 12.5. It features two M3 ports on the top, each with a 4mm offset from the centerline. The bottom has a 4.5mm wide base and a 4mm high section.
- Side View (Top Right):** Shows a manifold with a total width of 9.7 and a total height of 2.65. It features two M5 ports on the side, each with a 5mm offset from the centerline.
- Top View (Bottom Left):** Shows a manifold with a total width of 7.6 and a total height of 16. It features two M5 ports on the top, each with a 3.2mm offset from the centerline. The distance between the centers of the ports is 3.8mm.

An isometric view (bottom right) shows the manifold from a 3D perspective, highlighting its compact design and the arrangement of the ports.


[illegible]

Manifold in aluminium, black anodised, port connection G 1/8 and M5



Manifold	L	Item no.
2-way	33	639 887
3-way	49.5	639 862
4-way	66	639 863
5-way	82.5	639 864
6-way	99	639 865
8-way	132	639 866
10-way	165	639 867
12-way	198	639 868
Blanking plate kit	for non-configured valve positions	639 695

Ordering chart for accessories

Cable plug type 2506 acc. DIN EN 175301-803 form C, with flat seal and mounting screw, without cable

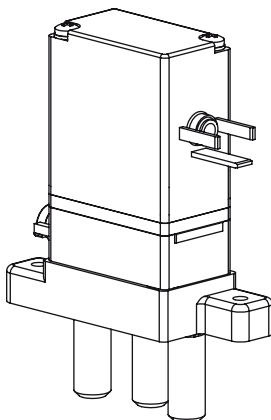
	Cable plug type 2506	Voltage	Item no.
	without circuitry	0-250V/AC+DC	008 353
	with LED	12-24V/DC	008 402
	with LED and varistor	12-24V/DC	008 408
	with rectifier, LED and varistor	12-24V/AC+DC	008 354

Cable plug type 2505

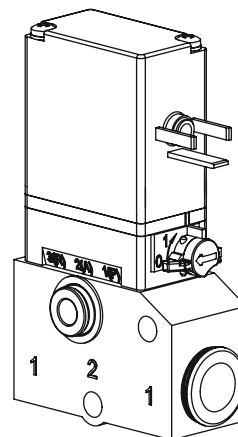
	Type 2505 cable version	Item no.
	with 3m cable	133 486
	with 5m cable	167 494
	Type 2505 flying leads version	Item no.
	with 300mm flying leads	644 068
	with 600mm flying leads	162 144

Application examples

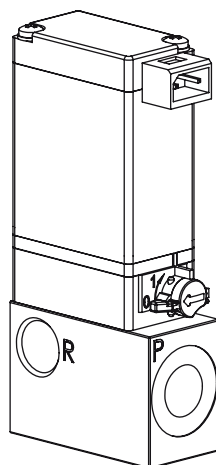
Plug type C device with tube spigot



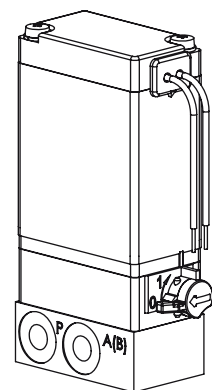
Plug type C device with tube coupling



Rectangular plug device with G1/8 manifold



Flying leads with M5 manifold



To find your nearest Bürkert facility, click on the orange box →

In case of special application conditions,
please consult for advice.

Subject to alterations
© Christian Bürkert GmbH & Co. KG

1202/2_EU-en_00891743



3/2-way Solenoid Valve for Pneumatic

- Compact design
- Single and manifold mounting
- Low power consumption
- Fast response times

Type 6510 can be combined with...



Type 8640

Valve island



Type 2031

Diaphragm valve

The Type 6510 consist of a pilot flipper valve Type 6144 and a pneumatic seat valve. The flipper principle allows switching of high pressures with low power consumption and short switching times. All valves are equipped with manual override as standard.

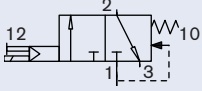
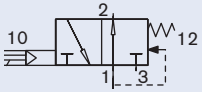
Type 6510 is extendable and preferably with a cable plug at the back of the valve island, Type 8640, and preferably with the plug connection applicable in front of the valve block at the pneumatic control actuators.

Technical data	
Orifice	DN 2.5 mm
Body material	PPS, PA
Seal material	NBR, FKM
Medium	Lubricated, oilfree, dry compressed air; neutral gases (5µm filter recommended)
Medium temperature	0 to +50 °C
Ambient temperature	0 to +55 °C
Manual override	Standard
Port connection	Flange for MP01
Pneumatic module	Type MP01 with M5 or push-in connection Ø4 mm
Voltage tolerance	±10%
Operating voltages	24 V DC
Nominal power	0.8 W
Duty cycle	Continuous operation (100% ED)
Electric connection on valve	Rectangular plug, 2-pin, with raster 5.08 mm
Protection class	IP 40
Protection class	3 acc. to VDE 0580
Mounting	with 2 self tapping screws for plastic 2 x 20
Installation	As required, preferably with actuator upright

Response times [ms]	Measurement acc. to ISO 12238
Opening	<15ms
Closing	<10ms

Ordering chart for valves

3/2-way solenoid valve

Circuit function	Orifice [mm]	Q _{Nn} value air [l/min] ¹⁾	Pressure range [bar] ²⁾	Voltage/ Frequency [V/Hz]	Manual override	Item no. plug contact at rear ³⁾ for Valve island Type 8640	Item no. plug contact in front ⁴⁾ for valve block
C 3/2-way valve 	2.5	130	2.5-10	24 V/DC	with	184 041	184 313
					none	184 307	187 605
D 3/2 way valve 	2.5	130	2.5-10	24 V/DC	with	–	184 314
					none	184 309	–

¹⁾ Measured at +20°C, 6 bar pressure at valve inlet and 1 bar pressure difference

²⁾ Measured as overpressure to the atmospheric pressure

³⁾ At rear: Plug connection on flange side

⁴⁾ In front: Plug connection offset at 180° to flange

Ordering chart pneumatic module Type MP01 (for 3/2-way valve)

Modules Type MP01	Item no.
Connector module right, G 1/8	132 409
Connector module, right, NPT 1/8	133 465
Connector module, right, push-in connection Ø 8 mm	132 412
Connector module, left, G 1/8	132 408
Connector module, left, NPT 1/8	133 464
Connector module left, push-in connection Ø 8 mm	132 411
Connector module without supply, left	132 405

Modules Type MP01	Item no.
Basic model 2 valves, M5	132 413
Basic module, 2 valves, push-in connection	132 414
Basic model 3 valves, M5	132 415
Basic module, 3 valves, push-in connection	132 416
Basic module, 12 valves, M5	132 417
Basic module, 12 valves, push-in connection	132 418

Ordering chart accessories

Version	Feature	Item no.
Closing plug	for plug-in coupling Ø 4 mm	781 664
Blanking plug	G 1/8	631 019
Silencer	G 1/8	005 305
Covering plate, complete	for non-configured valve position on MP01	642 148
Rectangular cable plug	with 3 m cable	133 486
Rectangular cable plug	with 300 mm flying leads	644 068
Rectangular cable plug	with 2 single contacts	644 067

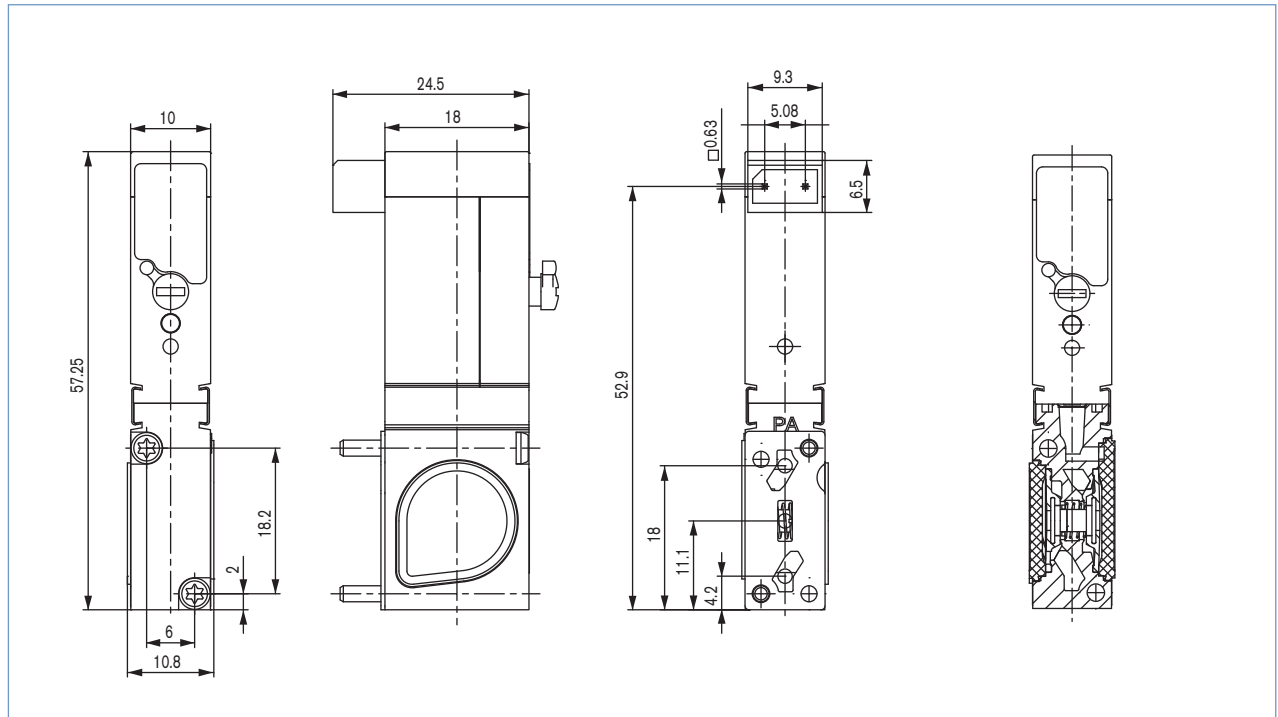
Note when ordering complete valve blocks:

Please order the modules for block assembly from right to left according to the example

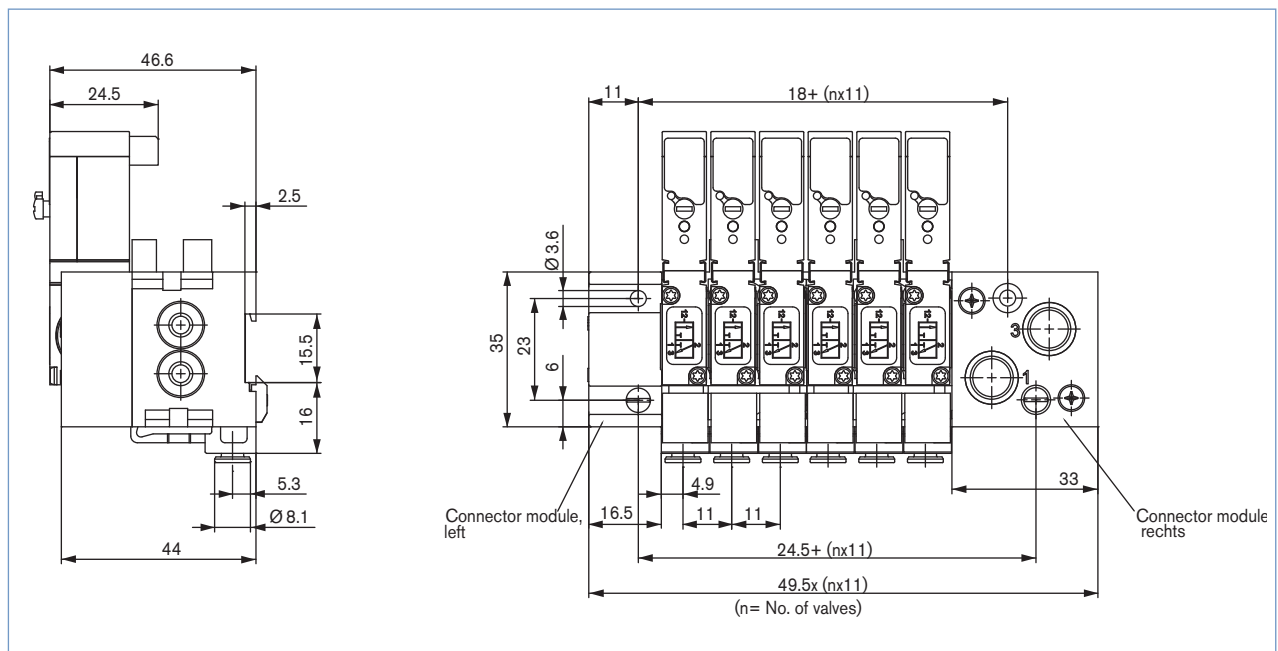
Ordering example: Type 6510 with Type MP01

No.	Unit	Item no.
1	Connector module, right, G 1/8	132 409
1	Basic module, 2 valves, push-in connection	132 414
1	Basic module, 3 valves, push-in connection	132 416
1	Connector module, left, G 1/8	132 408
5	Valves	134 281

Dimensions for 3/2-way solenoid valve [mm]



Manifold mounting on wall or with DIN/EN rail 50045



To find your nearest Bürkert facility, click on the orange box →

In case of special application conditions,
please consult for advice.

Subject to alterations
© Christian Bürkert GmbH & Co. KG

1005/1_EU-en_00891757



3/2-way Solenoid Valve for Pneumatic

- Compact design
- Single and manifold mounting
- Low power consumption
- Fast response times

Type 6510 can be combined with...



Type 8640

Valve island



Type 2031

Diaphragm valve

The Type 6510 consist of a pilot flipper valve Type 6144 and a pneumatic seat valve. The flipper principle allows switching of high pressures with low power consumption and short switching times. All valves are equipped with manual override as standard.

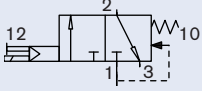
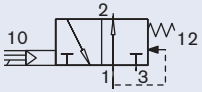
Type 6510 is extendable and preferably with a cable plug at the back of the valve island, Type 8640, and preferably with the plug connection applicable in front of the valve block at the pneumatic control actuators.

Technical data	
Orifice	DN 2.5 mm
Body material	PPS, PA
Seal material	NBR, FKM
Medium	Lubricated, oilfree, dry compressed air; neutral gases (5µm filter recommended)
Medium temperature	0 to +50 °C
Ambient temperature	0 to +55 °C
Manual override	Standard
Port connection	Flange for MP01
Pneumatic module	Type MP01 with M5 or push-in connection Ø4 mm
Voltage tolerance	±10%
Operating voltages	24 V DC
Nominal power	0.8 W
Duty cycle	Continuous operation (100% ED)
Electric connection on valve	Rectangular plug, 2-pin, with raster 5.08 mm
Protection class	IP 40
Protection class	3 acc. to VDE 0580
Mounting	with 2 self tapping screws for plastic 2 x 20
Installation	As required, preferably with actuator upright

Response times [ms]	Measurement acc. to ISO 12238
Opening	<15ms
Closing	<10ms

Ordering chart for valves

3/2-way solenoid valve

Circuit function	Orifice [mm]	Q _{Nn} value air [l/min] ¹⁾	Pressure range [bar] ²⁾	Voltage/ Frequency [V/Hz]	Manual override	Item no. plug contact at rear ³⁾ for Valve island Type 8640	Item no. plug contact in front ⁴⁾ for valve block
C 3/2-way valve 	2.5	130	2.5-10	24 V/DC	with	184 041	184 313
					none	184 307	187 605
D 3/2 way valve 	2.5	130	2.5-10	24 V/DC	with	–	184 314
					none	184 309	–

¹⁾ Measured at +20°C, 6 bar pressure at valve inlet and 1 bar pressure difference

²⁾ Measured as overpressure to the atmospheric pressure

³⁾ At rear: Plug connection on flange side

⁴⁾ In front: Plug connection offset at 180° to flange

Ordering chart pneumatic module Type MP01 (for 3/2-way valve)

Modules Type MP01	Item no.
Connector module right, G 1/8	132 409
Connector module, right, NPT 1/8	133 465
Connector module, right, push-in connection Ø 8 mm	132 412
Connector module, left, G 1/8	132 408
Connector module, left, NPT 1/8	133 464
Connector module left, push-in connection Ø 8 mm	132 411
Connector module without supply, left	132 405

Modules Type MP01	Item no.
Basic model 2 valves, M5	132 413
Basic module, 2 valves, push-in connection	132 414
Basic model 3 valves, M5	132 415
Basic module, 3 valves, push-in connection	132 416
Basic module, 12 valves, M5	132 417
Basic module, 12 valves, push-in connection	132 418

Ordering chart accessories

Version	Feature	Item no.
Closing plug	for plug-in coupling Ø 4 mm	781 664
Blanking plug	G 1/8	631 019
Silencer	G 1/8	005 305
Covering plate, complete	for non-configured valve position on MP01	642 148
Rectangular cable plug	with 3 m cable	133 486
Rectangular cable plug	with 300 mm flying leads	644 068
Rectangular cable plug	with 2 single contacts	644 067

Note when ordering complete valve blocks:

Please order the modules for block assembly from right to left according to the example

Ordering example: Type 6510 with Type MP01

No.	Unit	Item no.
1	Connector module, right, G 1/8	132 409
1	Basic module, 2 valves, push-in connection	132 414
1	Basic module, 3 valves, push-in connection	132 416
1	Connector module, left, G 1/8	132 408
5	Valves	134 281

Technical drawing of a mechanical part, showing four views with dimensions in millimeters (mm):

- Front View (Top Left):** Overall length 57.25, width 10. Bottom features a circular feature with a diameter of 6 and a distance of 10.8 from the left edge. A vertical dimension of 18.2 is shown on the right side, with a 2 mm offset from the bottom edge.
- Top View (Bottom Left):** Overall width 24.5, with a central section of 18 mm.
- Side View (Top Right):** Overall length 52.9. Features a top flange with a width of 9.3 and a central hole with a diameter of 5.08. A distance of 6.5 is shown from the right edge to the center of the hole. A vertical dimension of 18 is shown on the left side, with a 11.1 mm offset from the top edge. A 4.2 mm offset is shown from the bottom edge to the center of the hole. A small square feature with a width of 0.63 is located near the top center.
- Cross-section View (Bottom Right):** Shows the internal structure of the part, including a central cavity and various internal features.

p. 3/3

Pilot-Operated Solenoid Valve for Process Actuation



6516/6517 EExi



3/2- or 5/2-Way, PN 2 – 8 bar

- ✓ II2G EEx ia IIC T6 approved
PTB 01 ATEX 2175
- ✓ FM IS / I, II, III /1/ ABCDEFG
approved
- ✓ High flow rates
- ✓ Long service life

Hazardous Areas

6516
6517
EExi

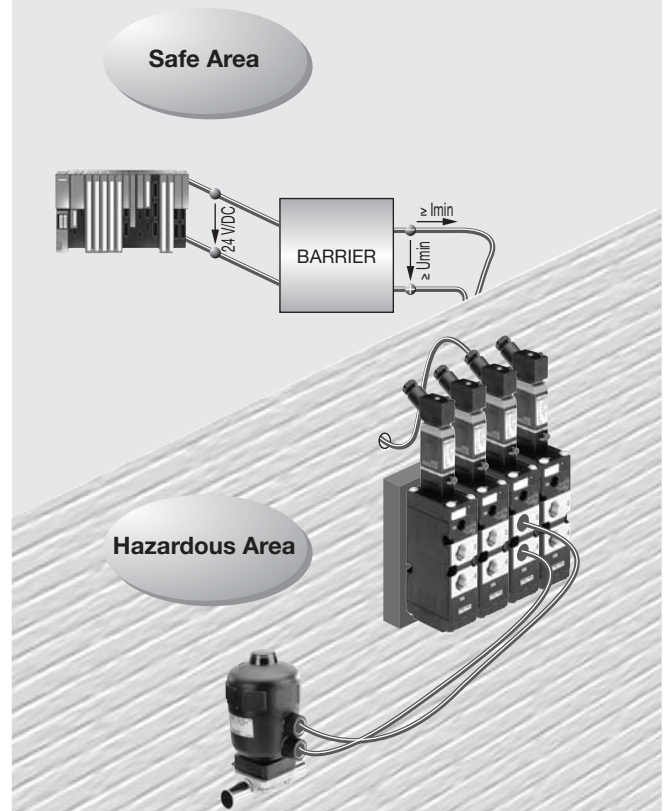
The 6516/6517 EExi valves are used for process actuation in hazardous areas. Thanks to the intrinsically safe design and the possibility of block mounting, the valves can be used in a wide variety of demanding applications.

Process Specification

Nominal voltage	24 V/DC (for further information also consult our data sheet „Recommended Barriers“)
Duty cycle	100% continuously rated
Protection class	IP 65 with cable plug
Materials	PA
Body	Brass or stainless steel
Threaded port material	PB (NBR and PUR)
Seal	
Fluids	Lubricated or unlubricated compressed air, instrument air and nitrogen
Ambient temperatures	
Block assembly	-10 up to +50°C (T6) -10 up to +55°C (T5)
Single mounting	-10 up to +55°C (T6)
Mounting position	Any, preferably solenoid system upright

Applications: Target markets

- Chemical industry
- Pharmaceutical processing equipment
- Industrial waste water treatment
- Oil and gas industry



Circuit Function

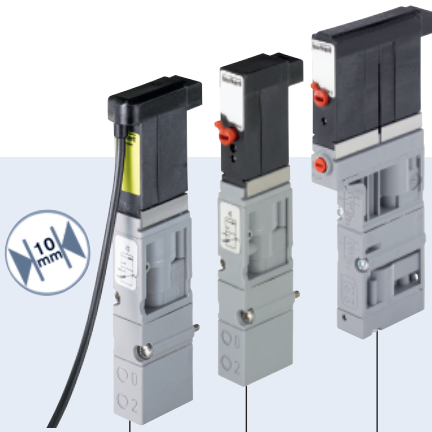
-

-

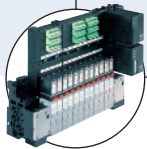
-

Opening	Pressure rise from 0 to 90%
Closing	Pressure drop from 100 to 10%

bürkert



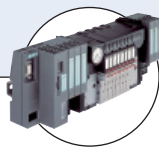
Type 6524 can be combined with...



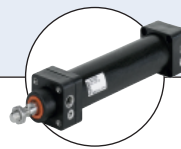
Type 8640
Valve island



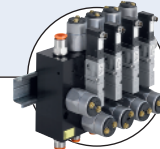
Type 2031
Diaphragm valve



Type 8644
Valve island



Type 0044
Cylinder



Type MKRS
Redundancy bloc

3/2-way and 2 x 3/2-way Solenoid Valve for pneumatics

- Compact design
- Single and manifold mounting
- Low power consumption
- Fast response times
- Second connection shut-off function

The Type 6524 consists of the pilot flipper solenoid valve Type 6144 and a pneumatic seat valve. The flipper principle allows switching of high pressures together with low power consumption and fast response times. All valves are equipped with manual override as a standard.

The 2 x 3/2-way valve version is the combination of two pilot flipper solenoid valves Type 6144 and a pneumatic seat valve.

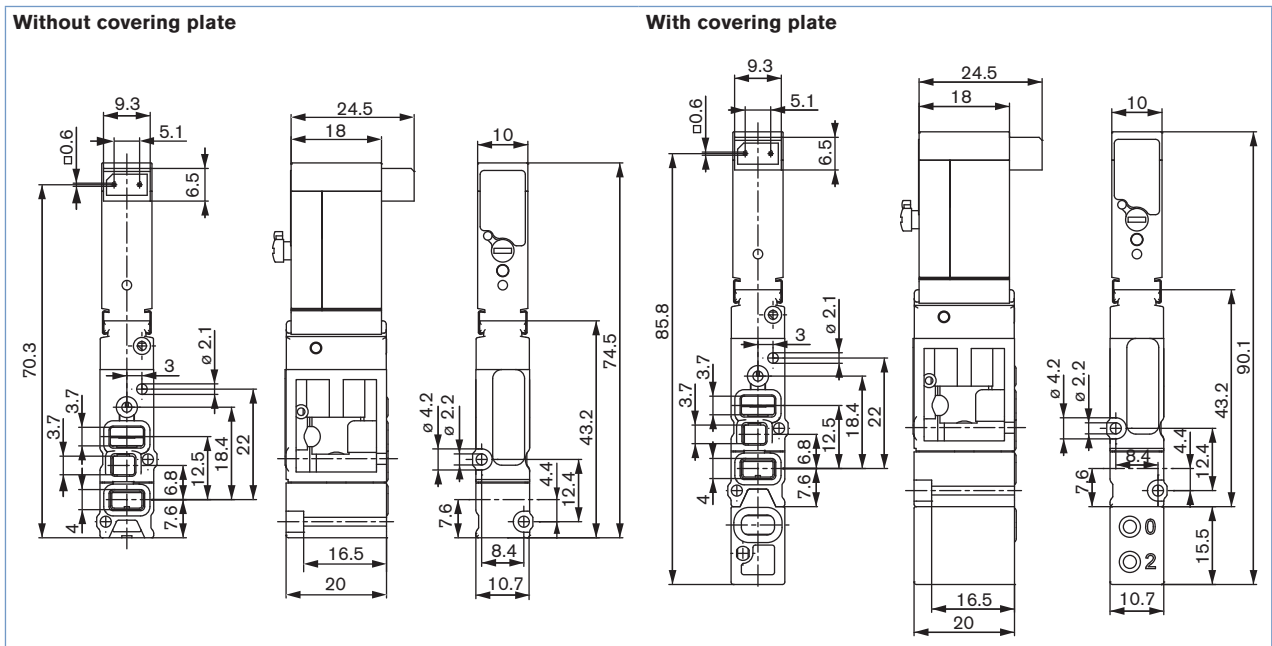
The valve is also available with a second connection (pressed cable), whereby a safety-related shut-off function is realized

Technical data	3/2-way valve	2 x 3/2-way valve
Orifice	DN4.0	
Body material	PPS, PA	
Seal material	FKM, NBR	
Medium	Lubricated, oilfree, dry compressed air; neutral gases (5 µm filter recommended)	
Medium temperature	-10...+50°C	
Ambient temperature	-10...+55 °C	
Manual override	Standard	
Port connection	Flange for MP11	
Pneumatic module	Type MP11 with M5, M7, push-in connection Ø 6 mm	
Voltage tolerance	±10%	
Cycle rate	approx. 1000 c.p.m.	
Voltage	24 V DC *	
Nominal power	0.8 W	2 x 0.8 W
Duty cycle	Continuous operation (100% ED)	
Electrical connection on valve	Rectangular plug with 2-pole raster 5.08 mm	Rectangular plug with 3-pole raster 2.54 mm
Type of protection	IP40 with rectangular plug	
Protection class	3 acc. to VDE 0580	
Weight	20 g	40 g
Mounting	with 2 screws M2 x 20	with 2 screws M2 x 28
Installation	As required, preferably with actuator upright	

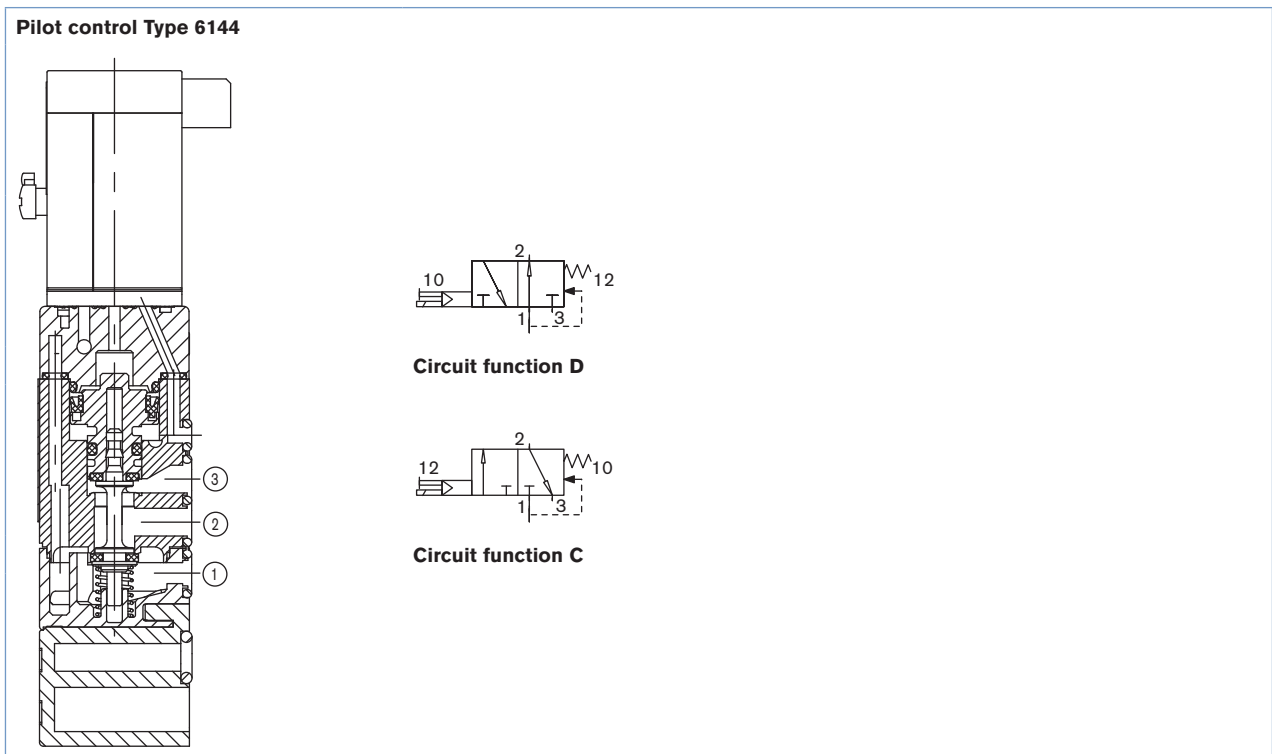
* 10% residual ripple allowed

Response times [ms]	Measurement acc. to ISO 12238
Opening	<10 ms
Closing	<10 ms

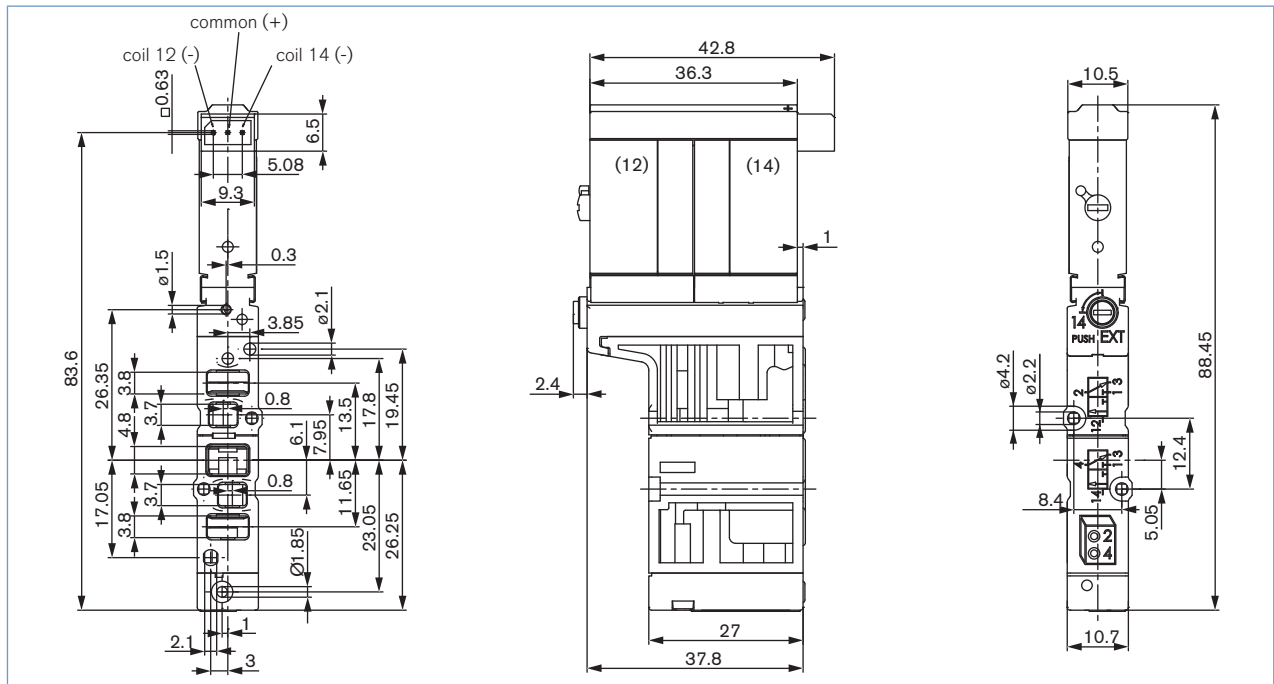
Dimensions [mm] 3/2-way solenoid valve - Standard version



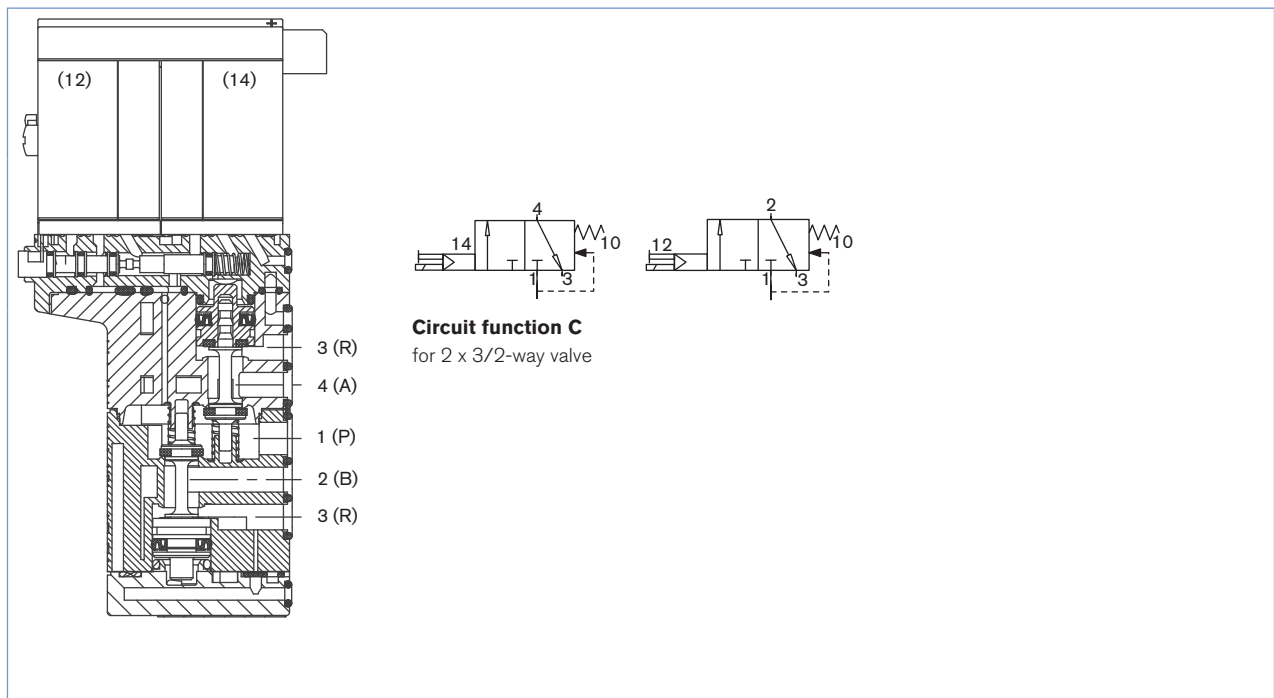
Sectional drawing 3/2-way solenoid valve - Standard version



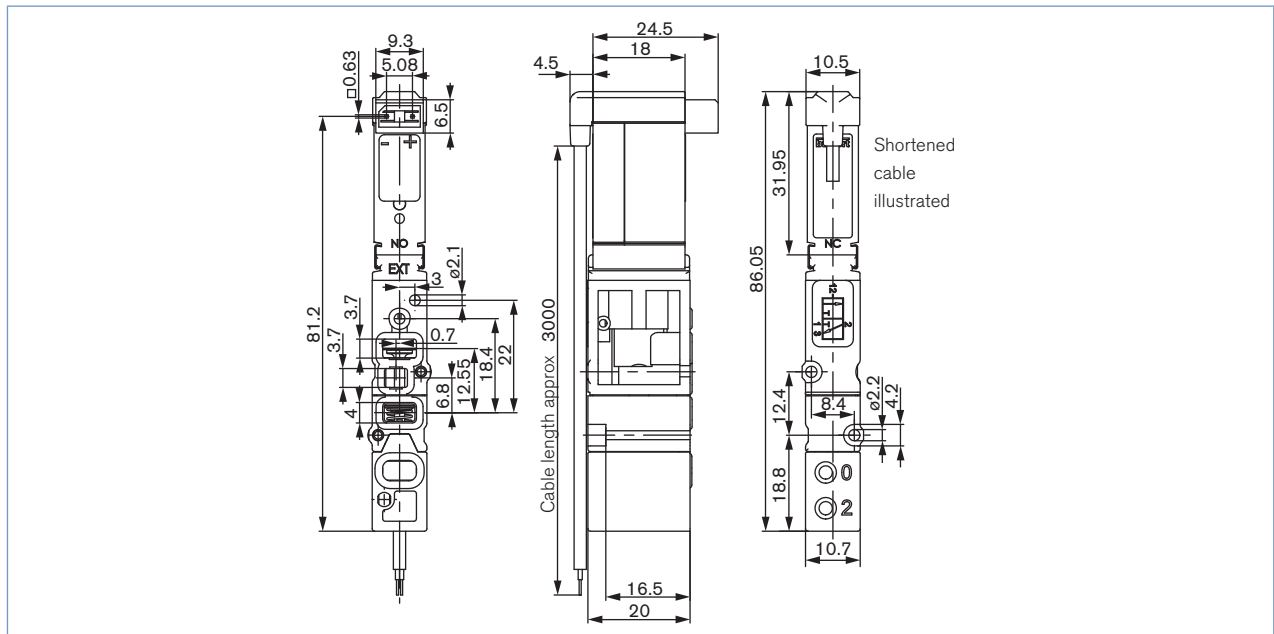
Dimensions [mm] 2 x 3/2-way solenoid valve - Standard version



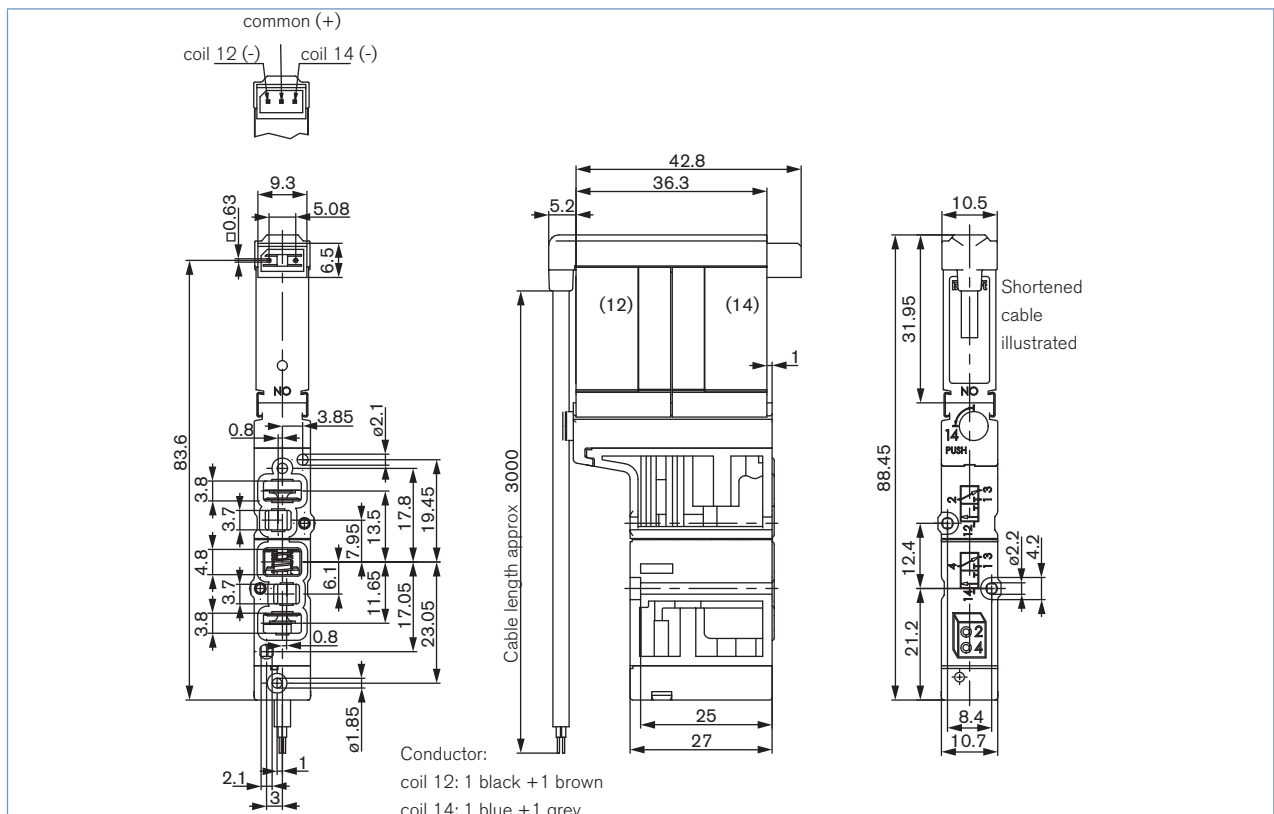
Sectional drawing 2 x 3/2-way solenoid valve - Standard version



Dimensions [mm] 3/2-way solenoid valve - Second connection shut-off function

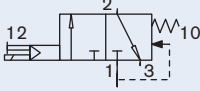
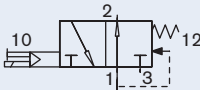


Dimensions [mm] 2 x 3/2-way solenoid valve - Second connection shut-off function



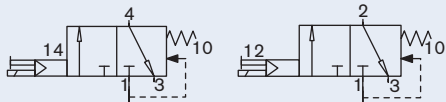
Ordering chart for valves - Standard version

3/2-way solenoid valve

Circuit function	Orifice [mm]	QNn value air [l/min] ²⁾	Pressure range [bar] ³⁾	Voltage/frequency [V/Hz]	Item no.
C 3/2-way valve 	4	300	Vac....10 ¹⁾	24 V DC *	186 258
			1...10	24 V DC *	186 257
			2.5...10	24 V DC *	184 043
D 3/2 way valve 	4	300	2.5...10	24 V DC *	184 400

* 10% residual ripple allowed

2 x 3/2-way solenoid valve

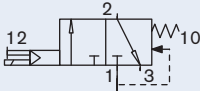
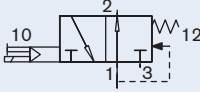
Circuit function	Orifice [mm]	QNn value air [l/min] ²⁾	Pressure range [bar] ³⁾	Voltage/frequency [V/Hz]	Integrated power savings electronics	Item no.
C 2 x 3/2 way valve 	4	300	Vac...10 ¹⁾	24 V DC *	Yes ⁴⁾	186 259
			2.5...10	24 V DC *	Yes ⁴⁾	186 260
			2.5...10	24 V DC *	No	204 710

* 10% residual ripple allowed

¹⁾ Version with auxiliary pilot air²⁾ Measured at +20°C, 6 bar pressure at valve inlet and 1 bar pressure difference³⁾ Measured as overpressure to the atmospheric pressure⁴⁾ Applicable on valve island 8640, AirLine system 8644 or valve blocks

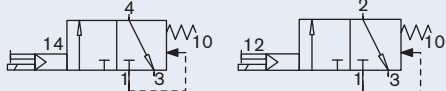
Ordering chart for valves - Second connection shut-off function

3/2-way solenoid valve, without manual override

Circuit function	Orifice [mm]	Q _{Nn} value air [l/min] ²⁾	Pressure range [bar] ³⁾	Voltage/frequency [V/Hz]	Item no.
C 3/2-way valve 	4	300	Vac...10 ¹⁾	24 V DC *	On request
			1...10	24 V DC *	On request
			2.5...10	24 V DC *	285 545
D 3/2 way valve 	4	300	2.5...10	24 V DC *	On request

* 10% residual ripple allowed

2 x 3/2-way solenoid valve, without manual override

Circuit function	Orifice [mm]	Q _{Nn} value air [l/min] ²⁾	Pressure range [bar] ³⁾	Voltage/frequency [V/Hz]	Integrated power savings electronics	Item no.
C 2 x 3/2 way valve 	4	300	Vac...10 ¹⁾	24 V DC *	Yes ⁴⁾	On request
			2.5...10	24 V DC *	Yes ⁴⁾	285 547
			2.5...10	24 V DC *	No	On request

* 10% residual ripple allowed

¹⁾ Version with auxiliary pilot air

²⁾ Measured at +20°C, 6 bar pressure at valve inlet and 1 bar pressure difference

³⁾ Measured as overpressure to the atmospheric pressure

⁴⁾ Applicable on valve island 8640, AirLine system 8644 or valve blocks

Ordering chart for accessories

Accessory	Version	Features	Item no.
Rectangular cable plug for 6524 single valve	Raster 5.08 mm	with 3 m cable 2-pins	133 486
		with 300 mm flying leads 2-pins	644 068
		with 2 single contacts	644 067
Covering plate for 5/2-way valve position	Complete	for 1 unused valve position	650 373
Covering plate for 2 x 3/2-way valve position		for 1 unused valve position	661 092
Pneumatic connector module	Left	G 1/4	144 750
		NPT 1/4	144 751
	Right	G 1/4	144 753
		NPT 1/4	144 754
Pneumatic basic module MP11, 2 valves wide	Push-in connection Ø 6 mm	without check valve	144 903
		without check valve for 2 x 3/2-way valve	170 261
		with check valve in R+S for 2 x 3/2-way valve	170 266
	Connection M7	without check valve	144 905
		without check valve for 2 x 3/2-way valve	170 263
		with check valve in R+S for 2 x 3/2-way valve	170 276
Pneumatic basic module MP11, 8 valves wide	Push-in connection Ø 6 mm	without check valve	144 912
		without check valve for 2 x 3/2-way valve	170 279
		with check valve in R+S for 2 x 3/2-way valve	170 285
	Connection M7	without check valve	144 914
		without check valve for 2 x 3/2-way valve	170 282
		with check valve in R+S for 2 x 3/2-way valve	170 287

To find your nearest Bürkert facility, click on the orange box →



In case of special application conditions,
please consult for advice.

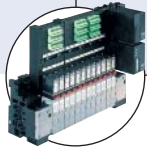
Subject to alteration
© Christian Bürkert GmbH & Co. KG

1510/10_EU-en_00891919

5/2-way Flipper Solenoid Valve for pneumatics



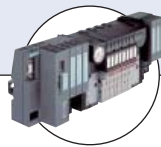
Type 6525 can be combined with...



Type 8640
Valve island



Type 2031
Diaphragm valve



Type 8644
Valve island



Type 0044
Cylinder



Type MKRS
Redundancy bloc

- Compact design
- Single and manifold mounting
- Low power consumption
- Fast response times
- Second connection shut-off function

The Type 6525 consist of a pilot flipper valve Type 6144 and a pneumatic seat valve. The flipper principle allows switching of high pressures together with low power consumption and fast response times.

All valves are equipped with manual override as a standard.

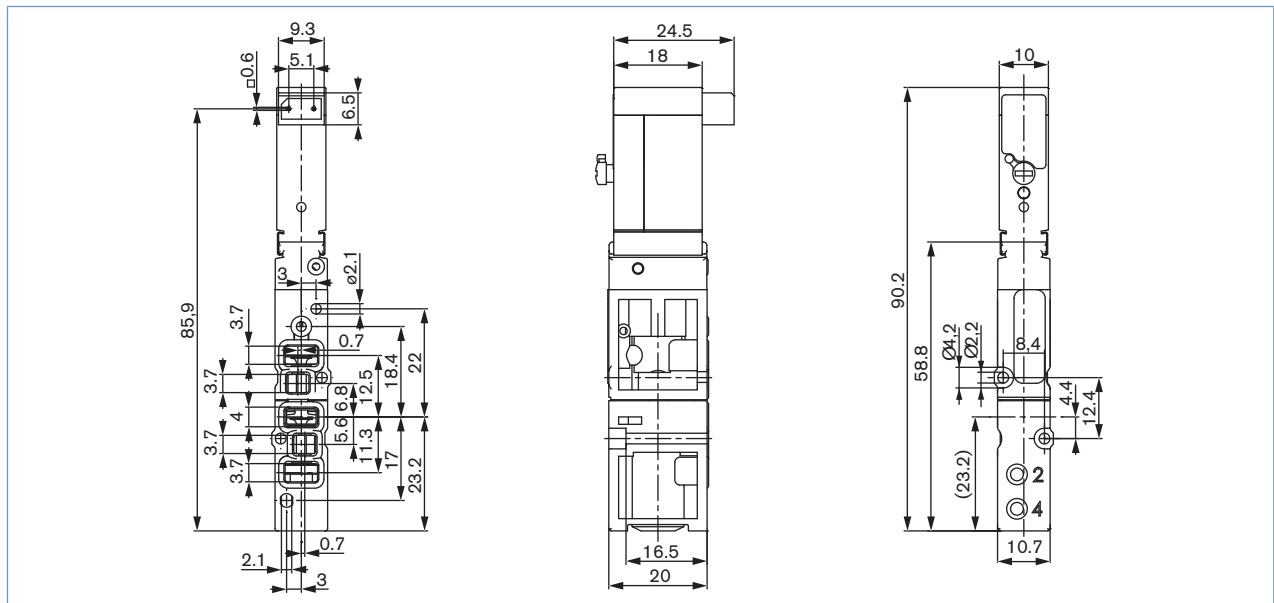
The valve is also available with a second connection (pressed cable), whereby a safety-related shut-off function is realized

Technical data	
Orifice	DN4,0
Body material	PPS, PA
Seal material	FKM, NBR and PUR
Medium	Lubricated, oil free, dry compressed air; neutral gases (5 µm filter recommended)
Medium temperature	-10...+50°C
Ambient temperature	-10...+55°C
Manual override	Standard
Port connection	Flange for MP11
Pneumatic module	Type MP11 with M5, M7, push-in connection Ø 6 mm
Voltage tolerance	±10%
Cycling rate	approx. 1000 c.p.m.
Voltage	24 V DC *
Nominal power	0.8 W
Duty cycle	Continuous operation (100% ED)
Electrical connection on valve	Rectangular plug with Raster 5.08 mm
Type of protection	IP40 with rectangular plug
Protection class	3 acc. to VDE 0580
Weight	21 g
Mounting	with 2 screws M2 x 20
Installation	As required, preferably with actuator upright

* 10% residual ripple allowed

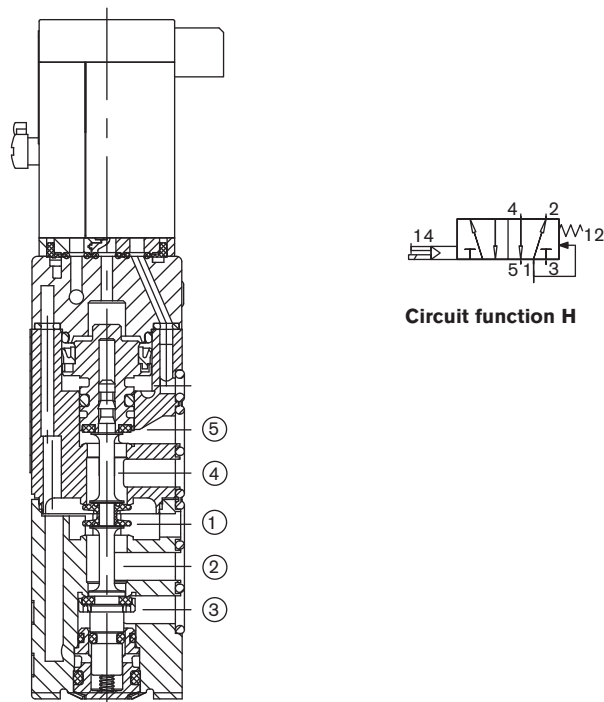
Response times [ms]	Measurement acc. to ISO 12238
Opening	<10 ms
Closing	<10 ms

Dimensions [mm] - Standard version

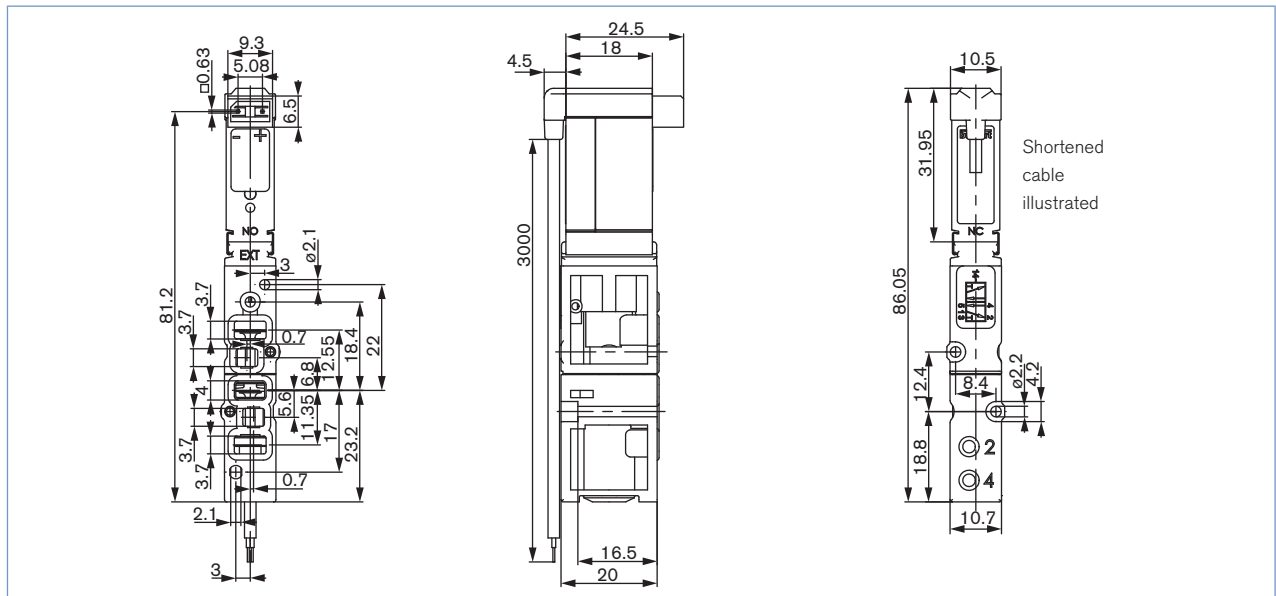


Sectional drawing - Standard version

Pilot control Type 6144



Dimensions [mm] - Second connection shut-off function



Ordering chart for valves

Standard version

Circuit function	Orifice [mm]	QN value air [l/min] ²⁾	Pressure range [bar] ³⁾	Response times			Item no.
				Opening [ms]	Closing [ms]	Voltage/frequency [V/Hz]	
H 5/2-way valve 	4	300	1....10 ¹⁾	<10	<10	24 V DC *	186 271
			2,5...10	<10	<10	24 V DC *	179 938

* 10% residual ripple allowed

¹⁾ Version with auxiliary pilot air

²⁾ Measured at +20°C, 6 bar pressure at valve inlet and 1 bar pressure difference

³⁾ Measured as overpressure to the atmospheric pressure

Second connection shut-off function, without manual override

Circuit function	Orifice [mm]	QN value air [l/min] ²⁾	Pressure range [bar] ³⁾	Response times			Item no.
				Opening [ms]	Closing [ms]	Voltage/frequency [V/Hz]	
H 5/2-way valve 	4	300	1....10 ¹⁾	<10	<10	24 V DC *	On request
			2,5...10	<10	<10	24 V DC *	285 544

* 10% residual ripple allowed

¹⁾ Version with auxiliary pilot air

²⁾ Measured at +20°C, 6 bar pressure at valve inlet and 1 bar pressure difference

³⁾ Measured as overpressure to the atmospheric pressure

Ordering chart for accessories

Accessory	Version	Features	Item no.
Rectangular cable plug	Raster 5.08 mm	with 3 m cable 2-pin	133 486
		with 300 mm flying leads 2-pin	644 068
		with 2 single contacts	644 067
Protective cover for 5/2-way valve position	complete	for 1 unused valve position	650 373
Pneumatic connector module	left	G 1/4	144 750
		NPT 1/4	144 751
	right	G 1/4	144 753
		NPT 1/4	144 754
Pneumatic basic module MP11, 2 valve wide	Push-in connection Ø 6 mm	without check valve	144 903
		with check valve in R and S	144 906
	Connection M7	without check valve	144 905
		with check valve in R and S	144 908
Pneumatic basic module MP11, 8 valve wide	Push-in connection Ø 6 mm	without check valve	144 912
		with check valve in R and S	144 915
	Connection M7	without check valve	144 914
		with check valve in R and S	144 917

To find your nearest Bürkert facility, click on the orange box →



In case of special application conditions,
please consult for advice

We reserve the right to make technical changes without notice
© Christian Bürkert GmbH & Co. KG

1601/7_EU-en_00891920

